

For Research Use Only

# RPGRIP1 Polyclonal antibody

Catalog Number: 13214-1-AP

Featured Product

1 Publications



## Basic Information

<b>Catalog Number:</b> 13214-1-AP	<b>GenBank Accession Number:</b> BC039089	<b>Purification Method:</b> Antigen affinity purification
<b>Size:</b> 150ul, Concentration: 550 ug/ml by Nanodrop and 413 ug/ml by Bradford method using BSA as the standard;	<b>GeneID (NCBI):</b> 57096	<b>Recommended Dilutions:</b> WB 1:500-1:1000 IHC 1:50-1:500
<b>Source:</b> Rabbit	<b>UNIPROT ID:</b> Q96KN7	
<b>Isotype:</b> IgG	<b>Full Name:</b> retinitis pigmentosa GTPase regulator interacting protein 1	
<b>Immunogen Catalog Number:</b> AG4089	<b>Calculated MW:</b> 147 kDa	
	<b>Observed MW:</b> 70 kDa	

## Applications

<b>Tested Applications:</b> WB, IHC, ELISA	<b>Positive Controls:</b> WB : Y79 cells, HEK-293 cells, HL-60 cells IHC : mouse eye tissue, mouse testis tissue
<b>Cited Applications:</b> WB, IF	
<b>Species Specificity:</b> human, mouse	
<b>Cited Species:</b> mouse	
<b>Note-IHC: suggested antigen retrieval with TE buffer pH 9.0; (*) Alternatively, antigen retrieval may be performed with citrate buffer pH 6.0</b>	

## Background Information

RPGRIP1 is a photoreceptor protein that interacts with retinitis pigmentosa GTPase regulator protein and is a key component of cone and rod photoreceptor cells. The biological functions of RPGRIP1 are complex. Mutations in this gene lead to autosomal recessive congenital blindness. In the eye, it is expressed in amacrine neurons and photoreceptors, and in numerous other tissues, albeit at greatly reduced levels. Moreover, it exists multiple isoforms with species-specific subcellular localization patterns, and the different isoforms perform cell-specific functions. Within photoreceptors, RPGRIP1 localizes predominantly to outer segments (OS) of rods and cones in humans, whereas in bovine eyes, it is found only in rod OS. In contrast, in mice, RPGRIP1 is found primarily in connecting cilia (CC), where it localizes between the ciliary axoneme and the plasma membrane. RPGRIP1 has multiple isoforms with MW 147 kDa, 70-76 kDa, 103 kDa, and 66 kDa.

## Notable Publications

Author	Pubmed ID	Journal	Application
Antonia Wiegering	29650680	EMBO J	WB,IF

## Storage

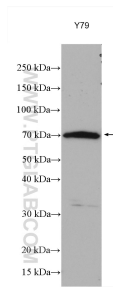
**Storage:**  
Store at -20°C. Stable for one year after shipment.  
**Storage Buffer:**  
PBS with 0.02% sodium azide and 50% glycerol pH 7.3.  
Aliquoting is unnecessary for -20°C storage

\*\*\* 20ul sizes contain 0.1% BSA

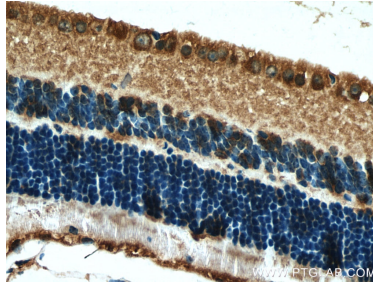
For technical support and original validation data for this product please contact:  
T: 1 (888) 4PTGLAB (1-888-478-4522) (toll free in USA), or 1(312) 455-8498 (outside USA)  
E: proteintech@ptglab.com  
W: ptglab.com

This product is exclusively available under Proteintech Group brand and is not available to purchase from any other manufacturer.

## Selected Validation Data



Y79 cells were subjected to SDS PAGE followed by western blot with 13214-1-AP (RGRIP1 antibody) at dilution of 1:500 incubated at room temperature for 1.5 hours.



Immunohistochemical analysis of paraffin-embedded mouse eye tissue slide using 13214-1-AP (RGRIP1 antibody) at dilution of 1:200 (under 40x lens). Heat mediated antigen retrieval with Tris-EDTA buffer (pH 9.0).



Immunohistochemical analysis of paraffin-embedded mouse eye tissue slide using 13214-1-AP (RGRIP1 antibody) at dilution of 1:200 (under 10x lens). Heat mediated antigen retrieval with Tris-EDTA buffer (pH 9.0).