

For Research Use Only



Alpha Sarcoglycan Polyclonal antibody

Catalog Number: 13222-1-AP

Basic Information

Catalog Number:

13222-1-AP

Size:

150ul , Concentration: 133 µg/ml by Bradford method using BSA as the standard;

Source:

Rabbit

Isotype:

IgG

Immunogen Catalog Number:

AG3924

GenBank Accession Number:

BC025702

GeneID (NCBI):

6442

UNIPROT ID:

Q16586

Full Name:

sarcoglycan, alpha (50kDa dystrophin-associated glycoprotein)

Calculated MW:

387 aa, 43 kDa

Purification Method:

Antigen affinity purification

Recommended Dilutions:

WB 1:200-1:1000

Applications

Tested Applications:

WB, ELISA

Species Specificity:

human

Positive Controls:

WB : human skeletal muscle tissue,

Background Information

Alpha-sarcoglycan is a member of the sarcoglycan-sarcospan complex (SG-SSPN), which is constituted by α/ϵ -, β -, γ -, and δ -SGs as well as SSPN. Alpha-sarcoglycan gene expression is exclusive of striated muscle and is finely regulated during myogenic differentiation, where the amount of alpha-sarcoglycan transcript is selectively increased after differentiation to myotubes (MTs). Alpha sarcoglycan's disruption causes limb-girdle muscular dystrophy.

Storage

Storage:

Store at -20°C. Stable for one year after shipment.

Storage Buffer:

PBS with 0.02% sodium azide and 50% glycerol pH 7.3.

Aliquoting is unnecessary for -20°C storage

*** 20ul sizes contain 0.1% BSA

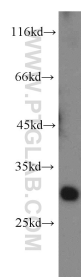
For technical support and original validation data for this product please contact:

T: 1 (888) 4PTGLAB (1-888-478-4522) (toll free in USA), or 1(312) 455-8498 (outside USA)

E: proteintech@ptglab.com
W: ptglab.com

This product is exclusively available under Proteintech Group brand and is not available to purchase from any other manufacturer.

Selected Validation Data



human skeletal muscle tissue were subjected to SDS PAGE followed by western blot with 13222-1-AP (Alpha-sarcoglycan antibody) at dilution of 1:200 incubated at room temperature for 1.5 hours.