

For Research Use Only

# RAMP2 Polyclonal antibody

Catalog Number: 13223-2-AP **3 Publications**



## Basic Information

<b>Catalog Number:</b> 13223-2-AP	<b>GenBank Accession Number:</b> BC027975	<b>Purification Method:</b> Antigen affinity purification
<b>Size:</b> 150ul , Concentration: 320 µg/ml by Nanodrop and 193 µg/ml by Bradford method using BSA as the standard;	<b>GeneID (NCBI):</b> 10266	<b>Recommended Dilutions:</b> WB 1:500-1:1000 IHC 1:20-1:200
<b>Source:</b> Rabbit	<b>Full Name:</b> receptor (G protein-coupled) activity modifying protein 2	
<b>Isotype:</b> IgG	<b>Calculated MW:</b> 175 aa, 20 kDa	
<b>Immunogen Catalog Number:</b> AG4028	<b>Observed MW:</b> 20 kDa	

## Applications

<b>Tested Applications:</b> IHC, WB, ELISA	<b>Positive Controls:</b>
<b>Cited Applications:</b> IHC, WB	<b>WB :</b> mouse brain tissue,
<b>Species Specificity:</b> human, mouse, rat	<b>IHC :</b> human breast cancer tissue,
<b>Cited Species:</b> bovine, human, mouse	

**Note-IHC: suggested antigen retrieval with TE buffer pH 9.0; (\*) Alternatively, antigen retrieval may be performed with citrate buffer pH 6.0**

## Background Information

RAMP2 (receptor-activity-modifying protein) is a member of the RAMP family of single-transmembrane-domain proteins which consist of an N-terminal extracellular domain, a transmembrane region and a short intracellular C-terminal tail. RAMPs are required to transport calcitonin-receptor-like receptor (CRLR) to the plasma membrane. CRLR, a G protein-coupled receptor, can function as either a calcitonin gene-related peptide (CGRP) receptor or an adrenomedullin receptor, depending on which members of the RAMP family are expressed. RAMP1 transports the CRLR to the plasma membrane and then remains associated with it to function as a terminally glycosylated CGRP receptor, while RAMP2 and RAMP3 transfer the CRLR to the cell surface to generate receptors that are preferentially selective for adrenomedullin. (PMID: 9620797; 16188935)

## Notable Publications

Author	Pubmed ID	Journal	Application
Hayashi Ken-Go KG	23849271	Reprod Biol Endocrinol	IHC
Makiko Kawaguchi	36799102	FEBS Open Bio	WB
MacManus Christopher F CF	21350119	FASEB J	WB

## Storage

**Storage:**  
Store at -20°C. Stable for one year after shipment.  
**Storage Buffer:**  
PBS with 0.02% sodium azide and 50% glycerol pH 7.3.  
Aliquoting is unnecessary for -20°C storage

**\*\*\* 20ul sizes contain 0.1% BSA**

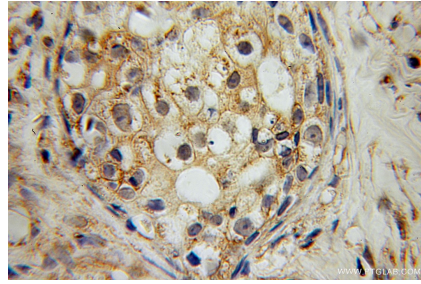
For technical support and original validation data for this product please contact:  
T: 1 (888) 4PTGLAB (1-888-478-4522) (toll free in USA), or 1(312) 455-8498 (outside USA)  
E: proteintech@ptglab.com  
W: ptglab.com

**This product is exclusively available under Proteintech Group brand and is not available to purchase from any other manufacturer.**

## Selected Validation Data



mouse brain tissue were subjected to SDS PAGE followed by western blot with 13223-2-AP (RAMP2 antibody) at dilution of 1:400 incubated at room temperature for 1.5 hours.



Immunohistochemical analysis of paraffin-embedded human breast cancer using 13223-2-AP (RAMP2 antibody) at dilution of 1:100 (under 10x lens).