

For Research Use Only

LRG1 Polyclonal antibody

Catalog Number: 13224-1-AP

Featured Product

28 Publications



Basic Information

Catalog Number: 13224-1-AP	GenBank Accession Number: BC034389	Purification Method: Antigen affinity purification
Size: 150ul, Concentration: 500 µg/ml by Nanodrop and 373 µg/ml by Bradford method using BSA as the standard;	GeneID (NCBI): 116844	Recommended Dilutions: WB 1:500-1:2000 IHC 1:50-1:500
Source: Rabbit	Full Name: leucine-rich alpha-2-glycoprotein 1	
Isotype: IgG	Calculated MW: 347 aa, 38 kDa	
Immunogen Catalog Number: AG3964	Observed MW: 45 kDa	

Applications

Tested Applications:

IHC, WB, ELISA

Cited Applications:

FC, IF, IHC, WB

Species Specificity:

human, mouse

Cited Species:

human, rat, mouse

Note-IHC: suggested antigen retrieval with TE buffer pH 9.0; (*) Alternatively, antigen retrieval may be performed with citrate buffer pH 6.0

Positive Controls:

WB: human plasma,

IHC: human liver tissue, mouse brain tissue, mouse liver tissue, human liver cancer tissue, human pancreas cancer tissue

Background Information

LRG1, also known as LRG, is a member of the leucine-rich repeat (LRR) family of proteins, containing eight LRR (leucine-rich) repeats and one LRRCT domain. The gene of LRG1 maps to chromosome 19p13.3, and encodes a 347-amino acid protein with a predicted unmodified molecular weight of 38 kD. The mature form of LRG1 is a secreted glycoprotein which has 312 amino acids and an experimentally determined molecular mass of 45 kD. The LRR family of proteins, including LRG1, have been shown to be involved in protein-protein interaction, signal transduction, and cell adhesion and development. LRG1 is expressed during granulocyte differentiation. Levels of the LRG protein are markedly elevated in acute appendicitis and therefore could be used as a diagnostic aid.

Notable Publications

Author	Pubmed ID	Journal	Application
ZhengTao Gu	32975015	J Cell Mol Med	WB
Qiong-Qiong Xing	31520916	Biomed Pharmacother	WB
Chenghao Liu	32887674	Diabetes	WB,IF,FC

Storage

Storage:

Store at -20°C. Stable for one year after shipment.

Storage Buffer:

PBS with 0.02% sodium azide and 50% glycerol pH 7.3.

Aliquoting is unnecessary for -20°C storage

*** 20ul sizes contain 0.1% BSA

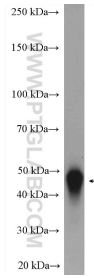
For technical support and original validation data for this product please contact:

T: 1 (888) 4PTGLAB (1-888-478-4522) (toll free in USA), or 1(312) 455-8498 (outside USA)

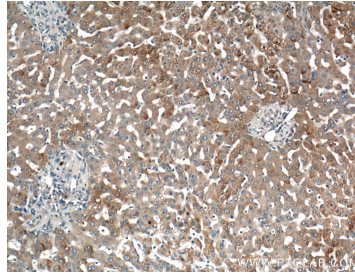
E: proteintech@ptglab.com
W: ptglab.com

This product is exclusively available under Proteintech Group brand and is not available to purchase from any other manufacturer.

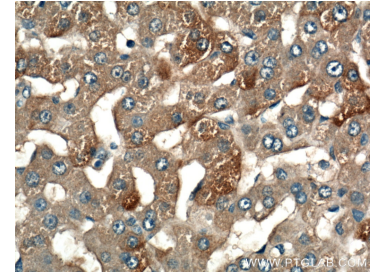
Selected Validation Data



human plasma were subjected to SDS PAGE followed by western blot with 13224-1-AP (LRG1 antibody) at dilution of 1:1000 incubated at room temperature for 1.5 hours.



Immunohistochemical analysis of paraffin-embedded human liver tissue slide using 13224-1-AP (LRG1 Antibody) at dilution of 1:200 (under 10x lens).



Immunohistochemical analysis of paraffin-embedded human liver tissue slide using 13224-1-AP (LRG1 Antibody) at dilution of 1:200 (under 40x lens).