

For Research Use Only

ARSB Polyclonal antibody

Catalog Number: 13227-1-AP

Featured Product

3 Publications



Basic Information

Catalog Number:

13227-1-AP

Size:

150ul, Concentration: 240 ug/ml by Nanodrop and 133 ug/ml by Bradford method using BSA as the standard;

Source:

Rabbit

Isotype:

IgG

Immunogen Catalog Number:

AG4083

GenBank Accession Number:

BC029051

GeneID (NCBI):

411

UNIPROT ID:

P15848

Full Name:

arylsulfatase B

Calculated MW:

413 aa, 46 kDa

Observed MW:

60 kDa, 44 kDa

Purification Method:

Antigen affinity purification

Recommended Dilutions:

WB 1:500-1:1000

IHC 1:20-1:200

Applications

Tested Applications:

WB, IHC, ELISA

Cited Applications:

WB, IF

Species Specificity:

human, mouse, rat

Cited Species:

mouse

Note-IHC: suggested antigen retrieval with TE buffer pH 9.0; (*) Alternatively, antigen retrieval may be performed with citrate buffer pH 6.0

Positive Controls:

WB : HepG2 cells,

IHC : human placenta tissue, human breast cancer tissue, human heart tissue

Notable Publications

Author	Pubmed ID	Journal	Application
Que Wang	31612078	Oxid Med Cell Longev	WB
Matthew R Blake	35604022	Elife	WB
Kosuke Hosoba	36032399	Biochem Biophys Rep	WB,IF

Storage

Storage:

Store at -20°C. Stable for one year after shipment.

Storage Buffer:

PBS with 0.02% sodium azide and 50% glycerol pH 7.3.

Aliquoting is unnecessary for -20°C storage

*** 20ul sizes contain 0.1% BSA

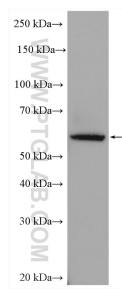
For technical support and original validation data for this product please contact:

T: 1 (888) 4PTGLAB (1-888-478-4522) (toll free in USA), or 1(312) 455-8498 (outside USA)

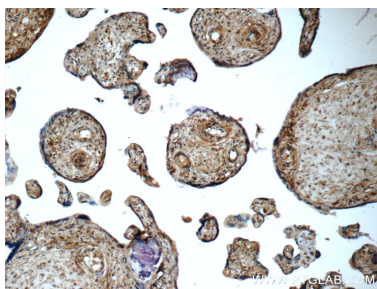
E: proteintech@ptglab.com
W: ptglab.com

This product is exclusively available under Proteintech Group brand and is not available to purchase from any other manufacturer.

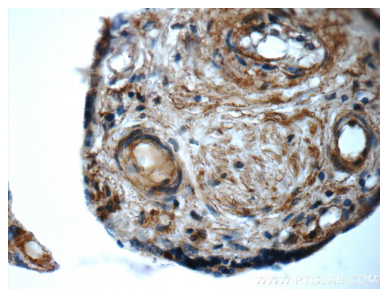
Selected Validation Data



HepG2 cells were subjected to SDS PAGE followed by western blot with 13227-1-AP (ARSB antibody) at dilution of 1:500 incubated at room temperature for 1.5 hours.



Immunohistochemical analysis of paraffin-embedded human placenta tissue slide using 13227-1-AP (ARSB Antibody) at dilution of 1:50 (under 10x lens).



Immunohistochemical analysis of paraffin-embedded human placenta tissue slide using 13227-1-AP (ARSB Antibody) at dilution of 1:50 (under 40x lens).