

For Research Use Only

Alpha 2-Antiplasmin Polyclonal antibody

Catalog Number: 13228-1-AP

2 Publications



Basic Information

Catalog Number:

13228-1-AP

Size:

150ul , Concentration: 400 ug/ml by Nanodrop and 207 ug/ml by Bradford method using BSA as the standard;

Source:

Rabbit

Isotype:

IgG

Immunogen Catalog Number:

AG4095

GenBank Accession Number:

BC031592

GeneID (NCBI):

5345

UNIPROT ID:

P08697

Full Name:

serpin peptidase inhibitor, clade F (alpha-2 antiplasmin, pigment epithelium derived factor), member 2

Calculated MW:

491 aa, 55 kDa

Observed MW:

48-55 kDa

Purification Method:

Antigen affinity purification

Recommended Dilutions:

WB 1:500-1:1000

IF/ICC 1:200-1:800

Applications

Tested Applications:

WB, IF/ICC, ELISA

Cited Applications:

WB

Species Specificity:

human

Cited Species:

human

Positive Controls:

WB : HepG2 cells, human liver tissue, K-562 cells

IF/ICC : HepG2 cells,

Notable Publications

Author	Pubmed ID	Journal	Application
Kadri Kangro	37736033	Res Pract Thromb Haemost	WB
Ting He	24659849	Dis Markers	WB

Storage

Storage:

Store at -20°C. Stable for one year after shipment.

Storage Buffer:

PBS with 0.02% sodium azide and 50% glycerol pH 7.3.

Aliquoting is unnecessary for -20°C storage

*** 20ul sizes contain 0.1% BSA

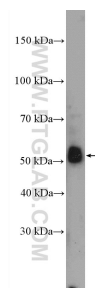
For technical support and original validation data for this product please contact:

T: 1 (888) 4PTGLAB (1-888-478-4522) (toll free in USA), or 1(312) 455-8498 (outside USA)

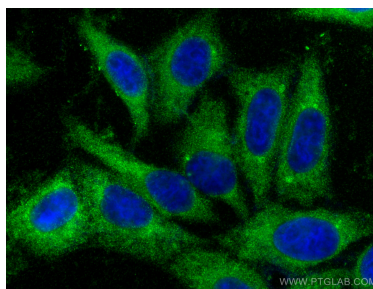
E: proteintech@ptglab.com
W: ptglab.com

This product is exclusively available under Proteintech Group brand and is not available to purchase from any other manufacturer.

Selected Validation Data



HepG2 cells were subjected to SDS PAGE followed by western blot with 13228-1-AP (Alpha-2-antiplasmin antibody) at dilution of 1:600 incubated at room temperature for 1.5 hours.



Immunofluorescent analysis of (-20°C Ethanol) fixed HepG2 cells using Alpha 2-Antiplasmin antibody (13228-1-AP) at dilution of 1:400 and CoraLite®488-Conjugated Goat Anti-Rabbit IgG(H+L).