

For Research Use Only

ATP12A Polyclonal antibody

Catalog Number: 13231-1-AP



Basic Information

Catalog Number:

13231-1-AP

Size:

150ul , Concentration: 133 ug/ml by Nanodrop and 133 ug/ml by Bradford method using BSA as the standard;

Source:

Rabbit

Isotype:

IgG

Immunogen Catalog Number:

AG4105

GenBank Accession Number:

BC031609

GeneID (NCBI):

479

UNIPROT ID:

P54707

Full Name:

ATPase, H⁺/K⁺ transporting, nongastric, alpha polypeptide

Calculated MW:

1045 aa, 116 kDa

Observed MW:

100-110 kDa

Purification Method:

Antigen affinity purification

Recommended Dilutions:

WB 1:500-1:1000

Applications

Tested Applications:

WB, ELISA

Species Specificity:

human

Positive Controls:

WB : HEK-293 cells, A431 cells

Background Information

ATP12A, also named as ATP1AL1 and Proton pump, belongs to the family of P-type cation transport ATPases. It catalyzes the hydrolysis of ATP coupled with the exchange of H⁺ and K⁺ ions across the plasma membrane. ATP12A is responsible for potassium absorption in various tissues. Expression of ATP12A is increased in benign prostate hyperplasia and tumor tissues.

Storage

Storage:

Store at -20°C. Stable for one year after shipment.

Storage Buffer:

PBS with 0.02% sodium azide and 50% glycerol pH 7.3.

Aliquoting is unnecessary for -20°C storage

*** 20ul sizes contain 0.1% BSA

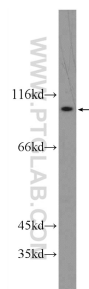
For technical support and original validation data for this product please contact:

T: 1 (888) 4PTGLAB (1-888-478-4522) (toll free in USA), or 1(312) 455-8498 (outside USA)

E: proteintech@ptglab.com
W: ptglab.com

This product is exclusively available under Proteintech Group brand and is not available to purchase from any other manufacturer.

Selected Validation Data



HEK-293 cells were subjected to SDS PAGE followed by western blot with 13231-1-AP (ATP12A Antibody) at dilution of 1:500 incubated at room temperature for 1.5 hours.