

For Research Use Only

# NBPF1 Polyclonal antibody, PBS Only

Catalog Number: 13242-1-PBS



## Basic Information

**Catalog Number:**

13242-1-PBS

**Size:**

100ug, Concentration: 1 mg/ml by Nanodrop;

**Source:**

Rabbit

**Isotype:**

IgG

**Immunogen Catalog Number:**

AG4096

**GenBank Accession Number:**

BC034418

**GeneID (NCBI):**

55672

**UNIPROT ID:**

Q3BBV0

**Full Name:**

neuroblastoma breakpoint family, member 1

**Calculated MW:**

1213 aa, 139 kDa

**Observed MW:**

139 kDa

**Purification Method:**

Antigen affinity purification

## Applications

**Tested Applications:**

IHC, IF/ICC, IP, Indirect ELISA

**Species Specificity:**

human

## Background Information

NBPF1 (Neuroblastoma Breakpoint Family, member 1) was originally identified in a neuroblastoma patient on the basis of its disruption by a chromosomal translocation t(1;17)

## Storage

**Storage:**

Store at -80°C.

**Storage Buffer:**

PBS only, pH7.3

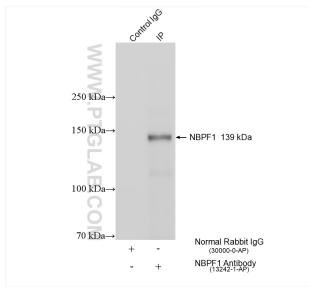
For technical support and original validation data for this product please contact:

T: 1 (888) 4PTGLAB (1-888-478-4522) (toll free in USA), or 1(312) 455-8498 (outside USA)

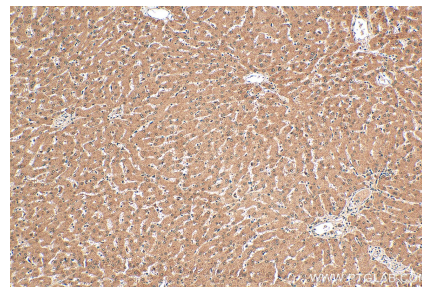
E: [proteintech@ptglab.com](mailto:proteintech@ptglab.com)  
W: [ptglab.com](http://ptglab.com)

**This product is exclusively available under Proteintech Group brand and is not available to purchase from any other manufacturer.**

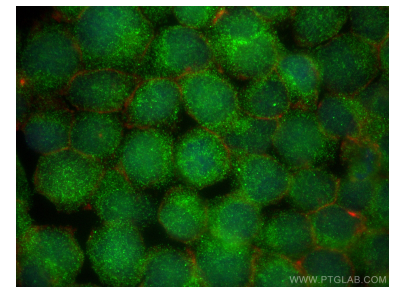
## Selected Validation Data



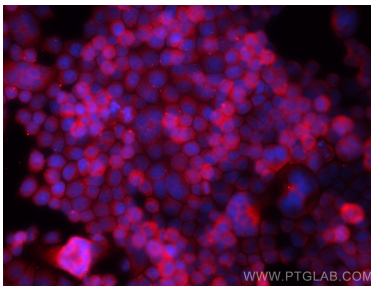
IP result of anti-NBPF1 (IP:13242-1-AP, 4 $\mu$ g; Detection:13242-1-AP 1:300) with HeLa cells lysate 1760  $\mu$ g. This data was developed using the same antibody clone with 13242-1-PBS in a different storage buffer formulation.



Immunohistochemical analysis of paraffin-embedded human liver tissue slide using 13242-1-AP (NBPF1 antibody) at dilution of 1:100 (under 10x lens). Heat mediated antigen retrieval with Tris-EDTA buffer (pH 9.0). This data was developed using the same antibody clone with 13242-1-PBS in a different storage buffer formulation.



Immunofluorescent analysis of (4% PFA) fixed Jurkat cells using NBPF1 antibody (13242-1-AP) at dilution of 1:200 and Multi-rAb CoraLite @ Plus 488-Goat Anti-Rabbit Recombinant Secondary Antibody (H+L) (RGAR002), CL594-Phalloidin (red). This data was developed using the same antibody clone with 13242-1-PBS in a different storage buffer formulation.



Immunofluorescent analysis of (4% PFA) fixed BxPC-3 cells using NBPF1 antibody (13242-1-AP) at dilution of 1:400 and CoraLite@594-Conjugated Goat Anti-Rabbit IgG(H+L) (SA00013-4). This data was developed using the same antibody clone with 13242-1-PBS in a different storage buffer formulation.