

For Research Use Only

# CYP4F12 Polyclonal antibody, PBS Only

Catalog Number: 13243-1-PBS



## Basic Information

<b>Catalog Number:</b> 13243-1-PBS	<b>GenBank Accession Number:</b> BC035350	<b>Purification Method:</b> Antigen affinity purification
<b>Size:</b> 100ug, Concentration: 1 mg/ml by Nanodrop;	<b>GeneID (NCBI):</b> 66002	
<b>Source:</b> Rabbit	<b>UNIPROT ID:</b> Q9HCS2	
<b>Isotype:</b> IgG	<b>Full Name:</b> cytochrome P450, family 4, subfamily F, polypeptide 12	
<b>Immunogen Catalog Number:</b> AG3957	<b>Calculated MW:</b> 524 aa, 60 kDa	
	<b>Observed MW:</b> 50-60 kDa	

## Applications

**Tested Applications:**  
WB, IHC, IF/ICC, Indirect ELISA

**Species Specificity:**  
human, mouse, rat

## Background Information

CYP4F12(Cytochrome P450 4F12) Catalyzes leukotriene B4 omega-hydroxylation and arachidonic acid omega-hydroxylation but with an activity much lower than that of CYP4F2. It expresses a band of 60kDa in adult and fetal liver, kidney, placenta at term, seminal vesicles, and the prostate gland(PMID:15078342). And it can be phosphorylated in vivo(PMID:18828626).

## Storage

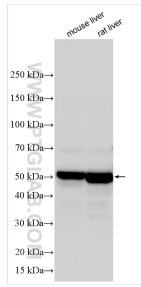
**Storage:**  
Store at -80°C.

**Storage Buffer:**  
PBS only, pH7.3

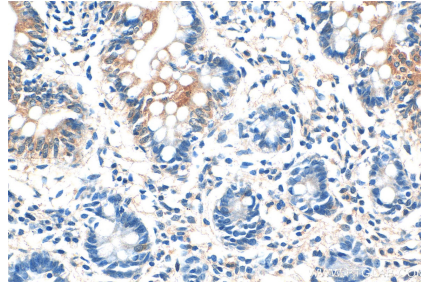
For technical support and original validation data for this product please contact:  
T: 1 (888) 4PTGLAB (1-888-478-4522) (toll free in USA), or 1(312) 455-8498 (outside USA)      E: proteintech@ptglab.com  
W: ptglab.com

This product is exclusively available under Proteintech Group brand and is not available to purchase from any other manufacturer.

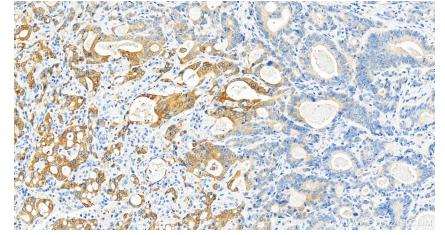
## Selected Validation Data



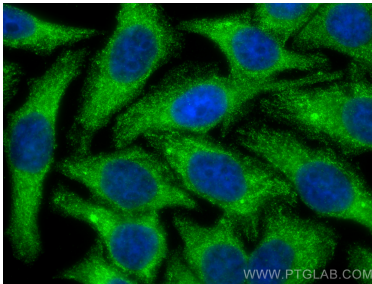
Various lysates were subjected to SDS PAGE followed by western blot with 13243-1-AP (CYP4F12 antibody) at dilution of 1:10000 incubated at room temperature for 1.5 hours. This data was developed using the same antibody clone with 13243-1-PBS in a different storage buffer formulation.



Immunohistochemical analysis of paraffin-embedded human small intestine tissue slide using 13243-1-AP (CYP4F12 antibody) at dilution of 1:500 (under 40x lens). This data was developed using the same antibody clone with 13243-1-PBS in a different storage buffer formulation.



Immunohistochemical analysis of paraffin-embedded human stomach cancer tissue slide using 13243-1-AP (CYP4F12 antibody) at dilution of 1:800 (under 20x lens). Heat mediated antigen retrieval with Tris-EDTA buffer (pH 9.0). This data was developed using the same antibody clone with 13243-1-PBS in a different storage buffer formulation.



Immunofluorescent analysis of (-20°C Ethanol) fixed HepG2 cells using CYP4F12 antibody (13243-1-AP) at dilution of 1:400 and CoraLite®488-Conjugated Goat Anti-Rabbit IgG(H+L) (SA00013-2). This data was developed using the same antibody clone with 13243-1-PBS in a different storage buffer formulation.