

For Research Use Only

# SRGAP1 Polyclonal antibody

Catalog Number: 13252-1-AP

3 Publications



## Basic Information

### Catalog Number:

13252-1-AP

### Size:

150ul, Concentration: 700 ug/ml by Nanodrop and 333 ug/ml by Bradford method using BSA as the standard;

### Source:

Rabbit

### Isotype:

IgG

### Immunogen Catalog Number:

AG4104

### GenBank Accession Number:

BC029919

### GeneID (NCBI):

57522

### UNIPROT ID:

Q7Z6B7

### Full Name:

SLIT-ROBO Rho GTPase activating protein 1

### Calculated MW:

1085 aa, 124 kDa

### Observed MW:

124 kDa

### Purification Method:

Antigen affinity purification

### Recommended Dilutions:

WB 1:1000-1:4000

IP 0.5-4.0 ug for 1.0-3.0 mg of total protein lysate

IHC 1:50-1:500

## Applications

### Tested Applications:

WB, IP, IHC, ELISA

### Cited Applications:

WB, IP, IF

### Species Specificity:

human, mouse

### Cited Species:

human, mouse

### Positive Controls:

**WB** : HeLa cells, mouse brain tissue, Apoptosised HeLa cells, mouse kidney tissue, HEK-293 cells, SH-SY5Y cells

**IP** : mouse kidney tissue,

**IHC** : human liver cancer tissue, mouse testis tissue, human kidney tissue

**Note-IHC: suggested antigen retrieval with TE buffer pH 9.0; (\*) Alternatively, antigen retrieval may be performed with citrate buffer pH 6.0**

## Notable Publications

Author	Pubmed ID	Journal	Application
Chandrani Mondal	36130489	Cell Rep	WB,IF
Manuel Rogg	33514561	J Am Soc Nephrol	WB,IF,IP
Yuyang Feng	27923383	J Exp Clin Cancer Res	WB

## Storage

### Storage:

Store at -20°C. Stable for one year after shipment.

### Storage Buffer:

PBS with 0.02% sodium azide and 50% glycerol pH 7.3.

Aliquoting is unnecessary for -20°C storage

\*\*\* 20ul sizes contain 0.1% BSA

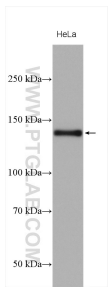
For technical support and original validation data for this product please contact:

T: 1 (888) 4PTGLAB (1-888-478-4522) (toll free in USA), or 1(312) 455-8498 (outside USA)

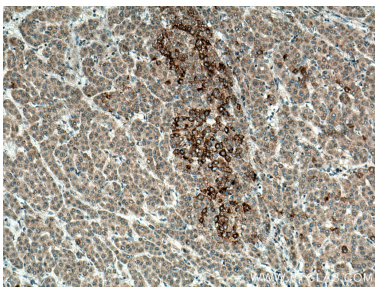
E: [proteintech@ptglab.com](mailto:proteintech@ptglab.com)  
W: [ptglab.com](http://ptglab.com)

This product is exclusively available under Proteintech Group brand and is not available to purchase from any other manufacturer.

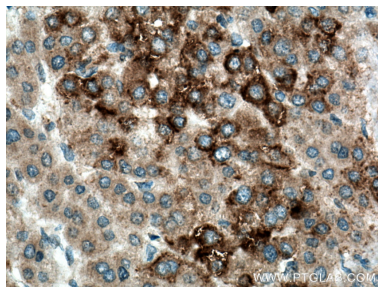
Selected Validation Data



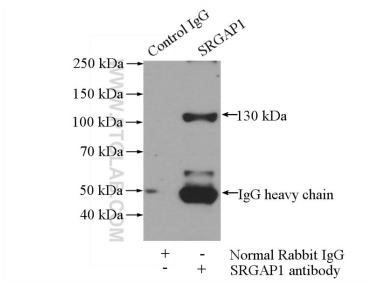
HeLa cells were subjected to SDS PAGE followed by western blot with 13252-1-AP (SRGAP1 antibody) at dilution of 1:2000 incubated at room temperature for 1.5 hours.



Immunohistochemical analysis of paraffin-embedded human liver cancer tissue slide using 13252-1-AP (SRGAP1 antibody) at dilution of 1:200 (under 10x lens). Heat mediated antigen retrieval with Tris-EDTA buffer (pH 9.0).



Immunohistochemical analysis of paraffin-embedded human liver cancer tissue slide using 13252-1-AP (SRGAP1 antibody) at dilution of 1:200 (under 40x lens). Heat mediated antigen retrieval with Tris-EDTA buffer (pH 9.0).



IP result of anti-SRGAP1 (IP:13252-1-AP, 4ug; Detection:13252-1-AP 1:500) with mouse kidney tissue lysate 4000ug.