

For Research Use Only

# SPPL2A Polyclonal antibody

Catalog Number: 13255-1-AP



## Basic Information

|  |   |  |
|--|---|--|
| <b>Catalog Number:</b><br>13255-1-AP   | <b>GenBank Accession Number:</b><br>BC025740          | <b>Purification Method:</b><br>Antigen affinity purification       |
| <b>Size:</b><br>150ul , Concentration: 280 ug/ml by Nanodrop and 207 ug/ml by Bradford method using BSA as the standard; | <b>GeneID (NCBI):</b><br>84888                        | <b>Recommended Dilutions:</b><br>WB 1:500-1:1000<br>IHC 1:20-1:200 |
| <b>Source:</b><br>Rabbit   | <b>UNIPROT ID:</b><br>Q8TCT8                          |  |
| <b>Isotype:</b><br>IgG   | <b>Full Name:</b><br>signal peptide peptidase-like 2A |  |
| <b>Immunogen Catalog Number:</b><br>AG3935   | <b>Calculated MW:</b><br>520 aa, 58 kDa               |  |
|  | <b>Observed MW:</b><br>58 kDa                         |  |

## Applications

|   |  |
|---|--|
| <b>Tested Applications:</b><br>WB, IHC, ELISA   | <b>Positive Controls:</b>  |
| <b>Species Specificity:</b><br>human, mouse, rat  | <b>WB :</b> human colon tissue, Jurkat cells, mouse colon tissue |
| <b>Note-IHC:</b> suggested antigen retrieval with <b>TE buffer pH 9.0; (*) Alternatively, antigen retrieval may be performed with citrate buffer pH 6.0</b> | <b>IHC :</b> human testis tissue, human kidney tissue            |

## Background Information

SPPL2A(Signal peptide peptidase-like 2A) is also named as IMP3(Intramembrane protease 3), PSL2(Presenilin-like protein 2) and belongs to the peptidase A22B family. It is an aspartyl intramembrane protease, has been implicated in the proteolysis of TNF-alpha, Fas Ligand and Bri2 and endogenous signal-peptide-peptidase-like2A (SPPL2a) is localised in lysosomes/late endosomes(PMID:21896273). This protein has a signal peptide with 25 amino acid and seven glycosylation sites.

## Storage

**Storage:**  
Store at -20°C. Stable for one year after shipment.  
**Storage Buffer:**  
PBS with 0.02% sodium azide and 50% glycerol pH 7.3.  
**Aliquoting is unnecessary for -20°C storage**

\*\*\* 20ul sizes contain 0.1% BSA

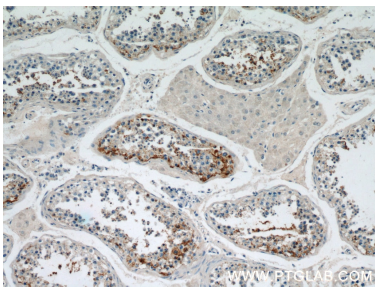
For technical support and original validation data for this product please contact:  
T: 1 (888) 4PTGLAB (1-888-478-4522) (toll free in USA), or 1(312) 455-8498 (outside USA)  
E: proteintech@ptglab.com  
W: ptglab.com

This product is exclusively available under Proteintech Group brand and is not available to purchase from any other manufacturer.

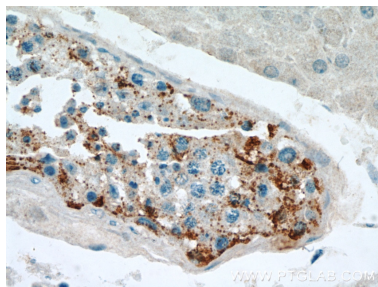
Selected Validation Data



human colon tissue were subjected to SDS PAGE followed by western blot with 13255-1-AP (SPPL2A antibody) at dilution of 1:500 incubated at room temperature for 1.5 hours.



Immunohistochemical analysis of paraffin-embedded human testis using 13255-1-AP (SPPL2A antibody) at dilution of 1:50 (under 10x lens).



Immunohistochemical analysis of paraffin-embedded human testis using 13255-1-AP (SPPL2A antibody) at dilution of 1:50 (under 40x lens).