

For Research Use Only

Gamma Adaptin Polyclonal antibody

Catalog Number: 13258-1-AP

7 Publications



Basic Information

Catalog Number:

13258-1-AP

Size:

150ul, Concentration: 400 ug/ml by Nanodrop and 333 ug/ml by Bradford method using BSA as the standard;

Source:

Rabbit

Isotype:

IgG

Immunogen Catalog Number:

AG3696

GenBank Accession Number:

BC036283

GeneID (NCBI):

164

UNIPROT ID:

O43747

Full Name:

adaptor-related protein complex 1, gamma 1 subunit

Calculated MW:

825 aa, 92 kDa

Observed MW:

91 kDa

Purification Method:

Antigen affinity purification

Recommended Dilutions:

WB 1:500-1:2000

IHC 1:20-1:200

Applications

Tested Applications:

WB, IHC, ELISA

Cited Applications:

WB, IF

Species Specificity:

human, mouse, rat

Cited Species:

human, mouse

Note-IHC: suggested antigen retrieval with TE buffer pH 9.0; (*) Alternatively, antigen retrieval may be performed with citrate buffer pH 6.0

Positive Controls:

WB : HEK-293 cells, mouse skeletal muscle tissue

IHC : human pancreas cancer tissue,

Notable Publications

Author	Pubmed ID	Journal	Application
Yan Huang	31552246	Front Cell Dev Biol	IF
Boris Simonetti	31576058	Nat Cell Biol	WB
Xin-Tai Wang	31244610	Front Cell Neurosci	WB

Storage

Storage:

Store at -20°C. Stable for one year after shipment.

Storage Buffer:

PBS with 0.02% sodium azide and 50% glycerol pH 7.3.

Aliquoting is unnecessary for -20°C storage

*** 20ul sizes contain 0.1% BSA

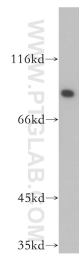
For technical support and original validation data for this product please contact:

T: 1 (888) 4PTGLAB (1-888-478-4522) (toll free in USA), or 1(312) 455-8498 (outside USA)

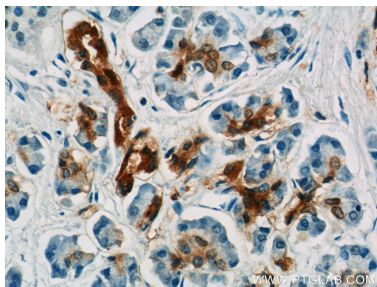
E: proteintech@ptglab.com
W: ptglab.com

This product is exclusively available under Proteintech Group brand and is not available to purchase from any other manufacturer.

Selected Validation Data



HEK-293 cells were subjected to SDS PAGE followed by western blot with 13258-1-AP (AP1G1 antibody) at dilution of 1:400 incubated at room temperature for 1.5 hours.



Immunohistochemical analysis of paraffin-embedded human pancreas cancer tissue slide using 13258-1-AP (Gamma adaptin Antibody) at dilution of 1:50 (under 40x lens).