

For Research Use Only

# MR1 Polyclonal antibody

Catalog Number: 13260-1-AP **5 Publications**



## Basic Information

<b>Catalog Number:</b> 13260-1-AP	<b>GenBank Accession Number:</b> BC012485	<b>Purification Method:</b> Antigen affinity purification
<b>Size:</b> 150ul , Concentration: 1000 µg/ml by Nanodrop and 500 µg/ml by Bradford method using BSA as the standard;	<b>GeneID (NCBI):</b> 3140	<b>Recommended Dilutions:</b> WB 1:100-1:500 IF 1:10-1:100
<b>Source:</b> Rabbit	<b>UNIPROT ID:</b> Q95460	
<b>Isotype:</b> IgG	<b>Full Name:</b> major histocompatibility complex, class I-related	
<b>Immunogen Catalog Number:</b> AG3849	<b>Calculated MW:</b> 341 aa, 39 kDa	

## Applications

<b>Tested Applications:</b> IF, WB, ELISA	<b>Positive Controls:</b> WB : THP-1 cells, IF : THP-1 cells,
<b>Cited Applications:</b> WB, IF, FC	
<b>Species Specificity:</b> human, mouse, rat	
<b>Cited Species:</b> human, mouse	

## Notable Publications

Author	Pubmed ID	Journal	Application
Laura Valestrand	35063408	Am J Pathol	FC
Corinna A Kulicke	34968463	J Biol Chem	WB
Tingting Guo	33049880	Carbohydr Polym	IF

## Storage

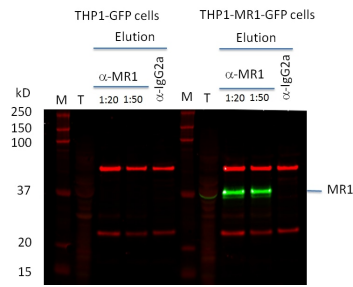
**Storage:**  
Store at -20°C. Stable for one year after shipment.  
**Storage Buffer:**  
PBS with 0.02% sodium azide and 50% glycerol pH 7.3.  
Aliquoting is unnecessary for -20°C storage

\*\*\* 20ul sizes contain 0.1% BSA

For technical support and original validation data for this product please contact:  
T: 1 (888) 4PTGLAB (1-888-478-4522) (toll free in USA), or 1(312) 455-8498 (outside USA)  
E: proteintech@ptglab.com  
W: ptglab.com

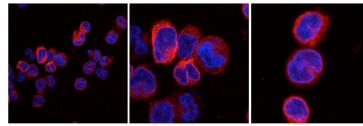
This product is exclusively available under Proteintech Group brand and is not available to purchase from any other manufacturer.

## Selected Validation Data



WB result of MR1 antibody (13260-1-AP, 1:250) with IP samples of THP.1-MR1 cells, by Claudia Gonzalez-Lopez, MRC Human Immunology Unit, University of Oxford. (Green MR1 protein).

Immunofluorescence in THP.1-MR1 cells  
MR1 antibody from Proteintech, dilution 1:50



IF result of MR1 antibody (13260-1-AP, 1:50) with THP.1-MR1 cells, by Claudia Gonzalez-Lopez, MRC Human Immunology Unit, University of Oxford.