

For Research Use Only

DLX3 Polyclonal antibody

Catalog Number: 13261-3-AP

3 Publications



Basic Information

Catalog Number:

13261-3-AP

Size:

150ul, Concentration: 600 ug/ml by Nanodrop;

Source:

Rabbit

Isotype:

IgG

Immunogen Catalog Number:

AG3865

GenBank Accession Number:

BC028970

GeneID (NCBI):

1747

UNIPROT ID:

O60479

Full Name:

distal-less homeobox 3

Calculated MW:

287 aa, 32 kDa

Observed MW:

32-38 kDa

Purification Method:

Antigen affinity purification

Recommended Dilutions:

WB 1:500-1:3000

IHC 1:20-1:200

Applications

Tested Applications:

WB, IHC, ELISA

Cited Applications:

WB, IF, IP, ColP

Species Specificity:

human, mouse

Cited Species:

human, mouse

Note-IHC: suggested antigen retrieval with TE buffer pH 9.0; (*) Alternatively, antigen retrieval may be performed with citrate buffer pH 6.0

Positive Controls:

WB : JAR cells, mouse lung tissue, NCCIT cells

IHC : human lung cancer tissue,

Background Information

Distal-less homeobox 3 (DLX3), a member of the Dlx family, plays a crucial role in epithelium, hair, bone, tooth and placental development. DLX3 is expressed during the calcium (Ca²⁺)-dependent epidermal differentiation process. The calculated molecular weight of DLX3 is 32 kDa. This antibody detects the 32-38 kDa protein in SDS-PAGE. (PMID: 31029881)

Notable Publications

Author	Pubmed ID	Journal	Application
Yueh-Ho Chiu	29743241	J Biol Chem	WB,IP,ColP,IF
Yue Zhang	35922041	Stem Cells	WB,ColP
Tingjie Gu	38825638	Exp Mol Med	WB

Storage

Storage:

Store at -20°C. Stable for one year after shipment.

Storage Buffer:

PBS with 0.02% sodium azide and 50% glycerol pH 7.3.

Aliquoting is unnecessary for -20°C storage

*** 20ul sizes contain 0.1% BSA

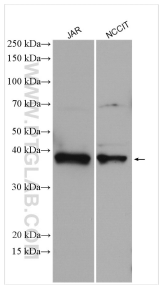
For technical support and original validation data for this product please contact:

T: 1 (888) 4PTGLAB (1-888-478-4522) (toll free in USA), or 1(312) 455-8498 (outside USA)

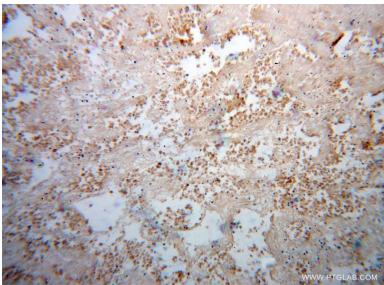
E: proteintech@ptglab.com
W: ptglab.com

This product is exclusively available under Proteintech Group brand and is not available to purchase from any other manufacturer.

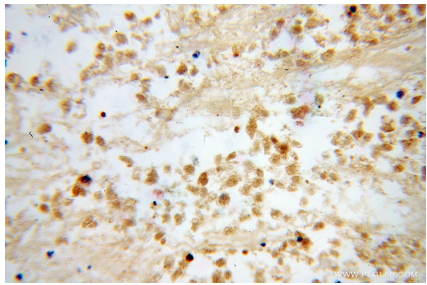
Selected Validation Data



Various lysates were subjected to SDS PAGE followed by western blot with 13261-3-AP (DLX3 antibody) at dilution of 1:1500 incubated at room temperature for 1.5 hours.



Immunohistochemical analysis of paraffin-embedded human lung cancer using 13261-3-AP (DLX3 antibody) at dilution of 1:100 (under 10x lens).



Immunohistochemical analysis of paraffin-embedded human lung cancer using 13261-3-AP (DLX3 antibody) at dilution of 1:100 (under 40x lens).