

For Research Use Only

# CTAGE1 Polyclonal antibody

Catalog Number: 13267-1-AP

2 Publications



## Basic Information

### Catalog Number:

13267-1-AP

### Size:

150ul, Concentration: 600 ug/ml by Nanodrop and 300 ug/ml by Bradford method using BSA as the standard;

### Source:

Rabbit

### Isotype:

IgG

### Immunogen Catalog Number:

AG3948

### GenBank Accession Number:

BC031065

### GeneID (NCBI):

64693

### UNIPROT ID:

Q96RT6

### Full Name:

cutaneous T-cell lymphoma-associated antigen 1

### Calculated MW:

754 aa, 89 kDa

### Observed MW:

86-120 kDa

### Purification Method:

Antigen affinity purification

### Recommended Dilutions:

WB 1:500-1:1000

IP 0.5-4.0 ug for 1.0-3.0 mg of total protein lysate

## Applications

### Tested Applications:

WB, IP, ELISA

### Cited Applications:

WB

### Species Specificity:

human

### Cited Species:

human

### Positive Controls:

WB : HeLa cells, Jurkat cells

IP : HeLa cells,

## Notable Publications

Author	Pubmed ID	Journal	Application
Shulin Li	34561617	Cell Res	
Ivan V Litvinov	24850846	Clin Cancer Res	WB

## Storage

### Storage:

Store at -20°C. Stable for one year after shipment.

### Storage Buffer:

PBS with 0.02% sodium azide and 50% glycerol pH 7.3.

Aliquoting is unnecessary for -20°C storage

\*\*\* 20ul sizes contain 0.1% BSA

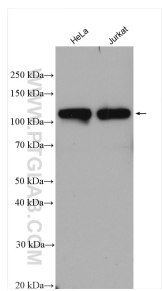
For technical support and original validation data for this product please contact:

T: 1 (888) 4PTGLAB (1-888-478-4522) (toll free in USA), or 1(312) 455-8498 (outside USA)

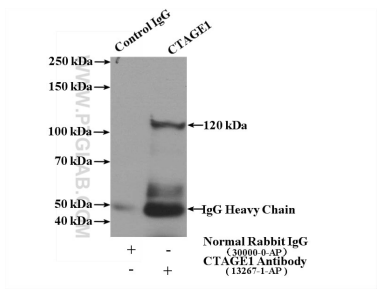
E: [proteintech@ptglab.com](mailto:proteintech@ptglab.com)  
W: [ptglab.com](http://ptglab.com)

This product is exclusively available under Proteintech Group brand and is not available to purchase from any other manufacturer.

Selected Validation Data



Various lysates were subjected to SDS PAGE followed by western blot with 13267-1-AP (CTAGE1 antibody) at dilution of 1:600 incubated at room temperature for 1.5 hours.



IP result of anti-CTAGE1 (IP:13267-1-AP, 4ug; Detection:13267-1-AP 1:500) with HeLa cells lysate 2400ug.