

For Research Use Only

IDO1 Polyclonal antibody

Catalog Number: 13268-1-AP

Featured Product

77 Publications



Basic Information

Catalog Number:

13268-1-AP

Size:

150ul, Concentration: 600 ug/ml by Nanodrop;

Source:

Rabbit

Isotype:

IgG

Immunogen Catalog Number:

AG3953

GenBank Accession Number:

BC027882

GeneID (NCBI):

3620

UNIPROT ID:

P14902

Full Name:

indoleamine 2,3-dioxygenase 1

Calculated MW:

403 aa, 45 kDa

Observed MW:

42 kDa

Purification Method:

Antigen affinity purification

Recommended Dilutions:

WB 1:500-1:2000

IHC 1:50-1:500

IF/ICC 1:50-1:500

Applications

Tested Applications:

WB, IHC, IF/ICC, ELISA

Cited Applications:

WB, IHC, IF

Species Specificity:

human

Cited Species:

human, mouse, rat, canine

Note-IHC: suggested antigen retrieval with TE buffer pH 9.0; (*) Alternatively, antigen retrieval may be performed with citrate buffer pH 6.0

Positive Controls:

WB : human placenta tissue, IFN gamma treated HeLa cells

IHC : human cervical squamous cancer tissue,

IF/ICC : SKOV-3 cells,

Background Information

IDO1 is the target for therapy in a range of clinical settings, including cancer, chronic infections, autoimmune and allergic syndromes, and transplantation. Elevated IDO1 expression is a hallmark of major viral infections including HIV, HBV, HCV or influenza and also of major bacteria infections, such as Tb, CAP, listeriosis and sepsis. Pathogens are able to hijack the immunosuppressive effects of IDO1 and make use of them to facilitate their own life cycle. MW of IDO1 is 40-42kd (PMID: 14502282; 17055065).

Notable Publications

Author	Pubmed ID	Journal	Application
Teresa W-M Fan	36150727	J Immunol	
Hironori Bando	30283439	Front Immunol	WB,IF
Zhihui Zhang	25212102	J Oral Pathol Med	WB, IF

Storage

Storage:

Store at -20°C. Stable for one year after shipment.

Storage Buffer:

PBS with 0.02% sodium azide and 50% glycerol, pH7.3

Aliquoting is unnecessary for -20°C storage

*** 20ul sizes contain 0.1% BSA

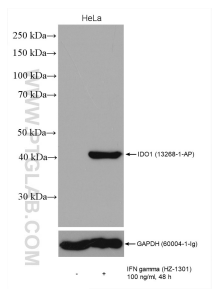
For technical support and original validation data for this product please contact:

T: 1 (888) 4PTGLAB (1-888-478-4522) (toll free in USA), or 1(312) 455-8498 (outside USA)

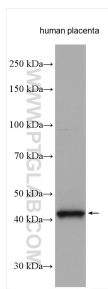
E: proteintech@ptglab.com
W: ptglab.com

This product is exclusively available under Proteintech Group brand and is not available to purchase from any other manufacturer.

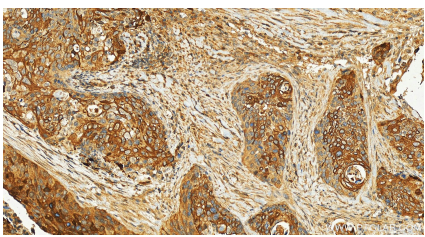
Selected Validation Data



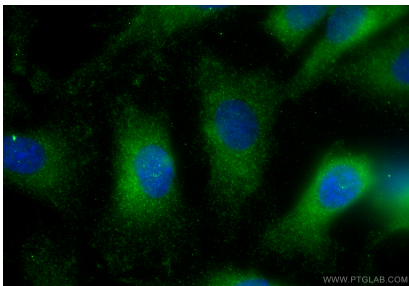
Various lysates were subjected to SDS PAGE followed by western blot with 13268-1-AP (IDO1 antibody) at dilution of 1:1000 incubated at room temperature for 1.5 hours.



Human placenta were subjected to SDS PAGE followed by western blot with 13268-1-AP (IDO1 antibody) at dilution of 1:1000 incubated at room temperature for 1.5 hours.



Immunohistochemical analysis of paraffin-embedded human cervical squamous cancer tissue slide using 13268-1-AP (IDO1 antibody) at dilution of 1:200 (under 20x lens). Heat mediated antigen retrieval with Tris-EDTA buffer (pH 9.0).



Immunofluorescent analysis of (-20°C Ethanol) fixed SKOV-3 cells using IDO1 antibody (13268-1-AP) at dilution of 1:200 and CoraLite®488-Conjugated Goat Anti-Rabbit IgG(H+L) (SA00013-2).