

For Research Use Only

# Fibromodulin Polyclonal antibody, PBS Only

Catalog Number: 13281-1-PBS



## Basic Information

### Catalog Number:

13281-1-PBS

### Size:

100ug , Concentration: 1 mg/ml by Nanodrop;

### Source:

Rabbit

### Isotype:

IgG

### Immunogen Catalog Number:

AG4030

### GenBank Accession Number:

BC035281

### GeneID (NCBI):

2331

### UNIPROT ID:

Q06828

### Full Name:

fibromodulin

### Calculated MW:

376 aa, 43 kDa

### Observed MW:

43 kDa

### Purification Method:

Antigen affinity purification

## Applications

### Tested Applications:

WB, IF/ICC, Indirect ELISA

### Species Specificity:

human, mouse, rat

## Background Information

Fibromodulin (FMOD), an extracellular matrix protein, belongs to the small leucine-rich proteoglycan family. Fibromodulin is a collagen-binding protein present in many types of connective tissues, e.g. cartilage, tendon, skin, sclera and cornea (PMID: 2531085). It is involved in fibrillogenesis, cell adhesion, and cytokine activity modulation (PMID: 15741214). Fibromodulin may participate in the assembly of the extracellular matrix as it interacts with type I and type II collagen fibrils and inhibits fibrillogenesis in vitro. It may also regulate TGF-beta activities by sequestering TGF-beta into the extracellular matrix. The calculated molecular mass of fibromodulin is 43 kDa, extracellular fibromodulin appears as one single band of 59 kDa due to glycosylation (PMID: 2531085; 22138190).

## Storage

### Storage:

Store at -80°C.

### Storage Buffer:

PBS Only

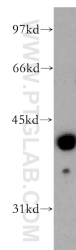
For technical support and original validation data for this product please contact:

T: 1 (888) 4PTGLAB (1-888-478-4522) (toll free in USA), or 1(312) 455-8498 (outside USA)

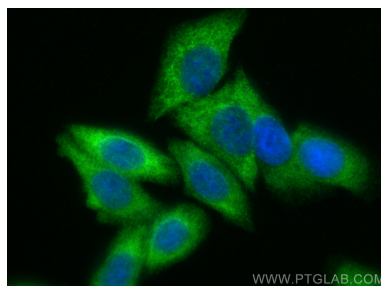
E: [proteintech@ptglab.com](mailto:proteintech@ptglab.com)  
W: [ptglab.com](http://ptglab.com)

This product is exclusively available under Proteintech Group brand and is not available to purchase from any other manufacturer.

## Selected Validation Data



human liver tissue were subjected to SDS PAGE followed by western blot with 13281-1-AP (Fibromodulin antibody) at dilution of 1:400 incubated at room temperature for 1.5 hours. This data was developed using the same antibody clone with 13281-1-PBS in a different storage buffer formulation.



Immunofluorescent analysis of (-20°C Ethanol) fixed HepG2 cells using Fibromodulin antibody (13281-1-AP) at dilution of 1:400 and CoraLite®488-Conjugated Goat Anti-Rabbit IgG(H+L) (SA00013-2). This data was developed using the same antibody clone with 13281-1-PBS in a different storage buffer formulation.