

For Research Use Only

IZUMO1 Polyclonal antibody

Catalog Number: 13296-1-AP



Basic Information

Catalog Number:

13296-1-AP

Size:

150ul , Concentration: 493 ug/ml by Bradford method using BSA as the standard;

Source:

Rabbit

Isotype:

IgG

Immunogen Catalog Number:

AG4008

GenBank Accession Number:

BC034769

GeneID (NCBI):

284359

UNIPROT ID:

Q8IYV9

Full Name:

izumo sperm-egg fusion 1

Calculated MW:

350 aa, 39 kDa

Observed MW:

56 kDa

Purification Method:

Antigen affinity purification

Recommended Dilutions:

WB 1:500-1:1000

IF-P 1:50-1:500

Applications

Tested Applications:

WB, IF-P, ELISA

Species Specificity:

human, mouse

Positive Controls:

WB : mouse testis tissue,

IF-P : mouse testis tissue,

Background Information

IZUMO1, also named as OBF, is a sperm-specific protein. It is a novel member of the immunoglobulin superfamily located on sperm and is indispensable for sperm-egg fusion. For mouse Izumo1, the MW is about 56 kDa. For human IZUMO1, the MW is about 37-40 kDa in WB detection.

Storage

Storage:

Store at -20°C. Stable for one year after shipment.

Storage Buffer:

PBS with 0.02% sodium azide and 50% glycerol pH 7.3.

Aliquoting is unnecessary for -20°C storage

*** 20ul sizes contain 0.1% BSA

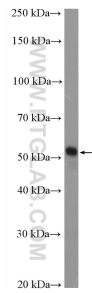
For technical support and original validation data for this product please contact:

T: 1 (888) 4PTGLAB (1-888-478-4522) (toll free in USA), or 1(312) 455-8498 (outside USA)

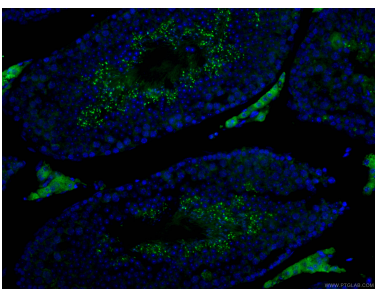
E: proteintech@ptglab.com
W: ptglab.com

This product is exclusively available under Proteintech Group brand and is not available to purchase from any other manufacturer.

Selected Validation Data



mouse testis tissue were subjected to SDS PAGE followed by western blot with 13296-1-AP (IZUMO1 antibody) at dilution of 1:500 incubated at room temperature for 1.5 hours.



Immunofluorescent analysis of (4% PFA) fixed mouse testis tissue using 13296-1-AP (IZUMO1 antibody), at dilution of 1:100 and CoraLite®488-Conjugated AffiniPure Goat Anti-Rabbit IgG(H+L).