

For Research Use Only

IZUMO1 Polyclonal antibody, PBS Only

Catalog Number: 13296-1-PBS



Basic Information

Catalog Number: 13296-1-PBS	GenBank Accession Number: BC034769	Purification Method: Antigen affinity purification
Size: 100ug, Concentration: 1 mg/ml by Nanodrop;	GeneID (NCBI): 284359	
Source: Rabbit	UNIPROT ID: Q8IYV9	
Isotype: IgG	Full Name: izumo sperm-egg fusion 1	
Immunogen Catalog Number: AG4008	Calculated MW: 350 aa, 39 kDa	
	Observed MW: 70 kDa	

Applications

Tested Applications:
WB, IF-P, Indirect ELISA

Species Specificity:
human, mouse

Background Information

The Izumo sperm egg fusion gene (IZUMO1) is a crucial member of the immunoglobulin superfamily and plays a crucial role in spermatogenesis, sperm egg interaction, and fusion. The expression of IZUMO1 mRNA was mainly in the testis and sperm and performed an important part in fertilization. IZUMO1 possess a well-conserved N-glycosylation site in the middle of an Ig loop among species. Research indicates that the glycosylated form of IZUMO1 has a molecular weight of 56 kDa, while its dimeric form has a molecular weight of 70 kDa (PMID: 21057513, PMID: 31146500).

Storage

Storage:
Store at -80°C.

Storage Buffer:
PBS only, pH7.3

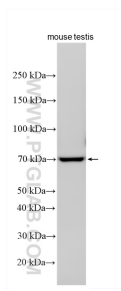
For technical support and original validation data for this product please contact:

T: 1 (888) 4PTGLAB (1-888-478-4522) (toll free in USA), or 1(312) 455-8498 (outside USA)

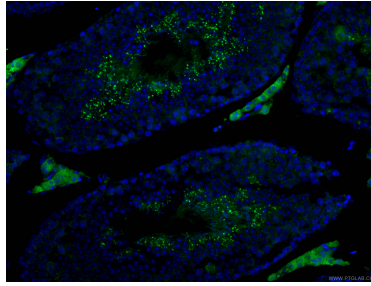
E: proteintech@ptglab.com
W: ptglab.com

This product is exclusively available under Proteintech Group brand and is not available to purchase from any other manufacturer.

Selected Validation Data



Mouse testis tissue were subjected to SDS PAGE followed by western blot with 13296-1-AP (IZUMO1 antibody) at dilution of 1:500 incubated at room temperature for 1.5 hours. This data was developed using the same antibody clone with 13296-1-PBS in a different storage buffer formulation.



Immunofluorescent analysis of (4% PFA) fixed mouse testis tissue using 13296-1-AP (IZUMO1 antibody), at dilution of 1:100 and CoraLite®488-Conjugated AffiniPure Goat Anti-Rabbit IgG(H+L). This data was developed using the same antibody clone with 13296-1-PBS in a different storage buffer formulation.