

For Research Use Only

# TRIB3 Polyclonal antibody

Catalog Number: 13300-1-AP

Featured Product

31 Publications



## Basic Information

<b>Catalog Number:</b> 13300-1-AP	<b>GenBank Accession Number:</b> BC027484	<b>Purification Method:</b> Antigen affinity purification
<b>Size:</b> 150ul , Concentration: 1000 µg/ml by Nanodrop;	<b>GeneID (NCBI):</b> 57761	<b>Recommended Dilutions:</b> WB 1:500-1:3000
<b>Source:</b> Rabbit	<b>UNIPROT ID:</b> Q96RU7	
<b>Isotype:</b> IgG	<b>Full Name:</b> tribbles homolog 3 (Drosophila)	
<b>Immunogen Catalog Number:</b> AG4085	<b>Calculated MW:</b> 358 aa, 40 kDa	
	<b>Observed MW:</b> 40-45 kDa	

## Applications

<b>Tested Applications:</b> WB, ELISA	<b>Positive Controls:</b> WB : L02 cells,
<b>Cited Applications:</b> WB,IP,IHC,IF	
<b>Species Specificity:</b> human	
<b>Cited Species:</b> human, monkey	

## Background Information

TRIB3 is a pseudokinase molecule that affects a number of cellular functions. TRIB3 has been reported to be highly activated in the presence of a variety of stressors, including the deprivation of neurotrophic factors, hypoxia, and ER stress. TRIB3 protein is associated with a good prognosis in human breast cancer patients, possibly due to the fact that TRIB3 is involved in hypoxia tolerance. (PMID: 21704407). TRIB3 protein predicted molecular weights is approximately 39-45 kDa. (PMID: 31191318, PMID: 24414038, PMID: 31578236).

## Notable Publications

Author	Pubmed ID	Journal	Application
Margita Márton	36097827	FEBS Open Bio	WB
Nan Wang	34503515	Reprod Biol Endocrinol	IF
Yasukazu Takanezawa	34678407	Toxicol Lett	WB

## Storage

**Storage:**  
Store at -20°C. Stable for one year after shipment.  
**Storage Buffer:**  
PBS with 0.02% sodium azide and 50% glycerol pH 7.3.  
Aliquoting is unnecessary for -20°C storage

\*\*\* 20ul sizes contain 0.1% BSA

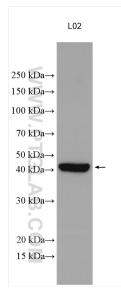
For technical support and original validation data for this product please contact:

T: 1 (888) 4PTGLAB (1-888-478-4522) (toll free in USA), or 1(312) 455-8498 (outside USA)

E: [proteintech@ptglab.com](mailto:proteintech@ptglab.com)  
W: [ptglab.com](http://ptglab.com)

This product is exclusively available under Proteintech Group brand and is not available to purchase from any other manufacturer.

## Selected Validation Data



L02 cells were subjected to SDS PAGE followed by western blot with 13300-1-AP (TRIB3 antibody) at dilution of 1:1500 incubated at room temperature for 1.5 hours.