

For Research Use Only

MAST1 Polyclonal antibody, PBS Only

Catalog Number: 13305-1-PBS

Featured Product



Basic Information

Catalog Number:

13305-1-PBS

Size:

100ug, Concentration: 1 mg/ml by Nanodrop;

Source:

Rabbit

Isotype:

IgG

Immunogen Catalog Number:

AG4126

GenBank Accession Number:

BC027985

GeneID (NCBI):

22983

UNIPROT ID:

Q9Y2H9

Full Name:

microtubule associated serine/threonine kinase 1

Calculated MW:

1570 aa, 171 kDa

Observed MW:

171 kDa

Purification Method:

Antigen affinity purification

Applications

Tested Applications:

WB, IP, Indirect ELISA

Species Specificity:

human, mouse, rat

Background Information

MAST1(microtubule associated serine/threonine kinase 1) is also named as KIAA0973, SAST(syntrophin-associated serine/threonine-protein kinase), SAST170 and belongs to the family of microtubule-associated serine/threonine kinases, which has a unique structural feature with a serine/threonine kinase domain and a postsynaptic density protein-95/discs large/zona occludens-1 domain(PMID:12614677). This protein plays a role in a broad range of neural functions and it appears to link the dystrophin/utrophin network with microtubule filaments via the syntrophins.

Storage

Storage:

Store at -80°C.

Storage Buffer:

PBS Only

For technical support and original validation data for this product please contact:

T: 1 (888) 4PTGLAB (1-888-478-4522) (toll free in USA), or 1(312) 455-8498 (outside USA)

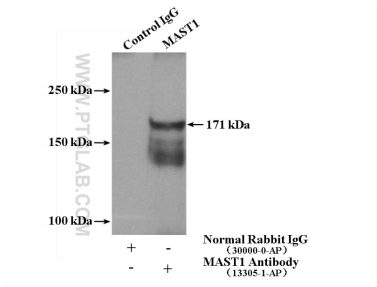
E: proteintech@ptglab.com
W: ptglab.com

This product is exclusively available under Proteintech Group brand and is not available to purchase from any other manufacturer.

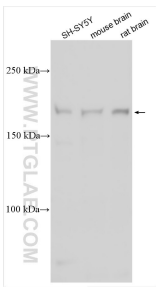
Selected Validation Data



mouse brain tissue were subjected to SDS PAGE followed by western blot with 13305-1-AP (MAST1 antibody) at dilution of 1:300 incubated at room temperature for 1.5 hours. This data was developed using the same antibody clone with 13305-1-PBS in a different storage buffer formulation.



IP result of anti-MAST1 (IP:13305-1-AP, 4ug; Detection:13305-1-AP 1:500) with mouse brain tissue lysate 4000ug. This data was developed using the same antibody clone with 13305-1-PBS in a different storage buffer formulation.



Various lysates were subjected to SDS PAGE followed by western blot with 13305-1-AP (MAST1 antibody) at dilution of 1:1000 incubated at room temperature for 1.5 hours. This data was developed using the same antibody clone with 13305-1-PBS in a different storage buffer formulation.