

For Research Use Only

CXCL7/PPBP Polyclonal antibody, PBS Only

Catalog Number: 13313-1-PBS



Basic Information

Catalog Number:

13313-1-PBS

Size:

100ug , Concentration: 1 mg/ml by Nanodrop;

Source:

Rabbit

Isotype:

IgG

Immunogen Catalog Number:

AG4147

GenBank Accession Number:

BC028217

GeneID (NCBI):

5473

UNIPROT ID:

P02775

Full Name:

pro-platelet basic protein (chemokine (C-X-C motif) ligand 7)

Calculated MW:

128 aa, 14 kDa

Observed MW:

8-14 kDa

Purification Method:

Antigen affinity purification

Applications

Tested Applications:

WB, IHC, Indirect ELISA

Species Specificity:

human, mouse

Background Information

PPBP, also named as NAP2, or β -Thromboglobulin, is a platelet-derived growth factor that belongs to the CXC chemokine family. This growth factor is a potent chemoattractant and activator of neutrophils. It has been shown to stimulate various cellular processes including DNA synthesis, mitosis, glycolysis, intracellular cAMP accumulation, prostaglandin E2 secretion, and synthesis of hyaluronic acid and sulfated glycosaminoglycan. It also stimulates the formation and secretion of plasminogen activator by synovial cells.

Storage

Storage:

Store at -80°C.

Storage Buffer:

PBS Only

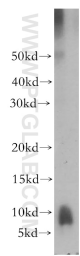
For technical support and original validation data for this product please contact:

T: 1 (888) 4PTGLAB (1-888-478-4522) (toll free in USA), or 1(312) 455-8498 (outside USA)

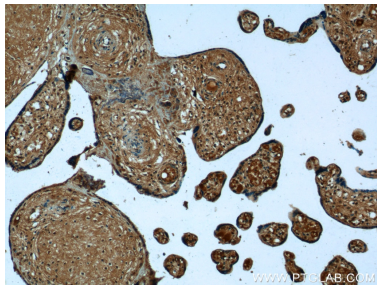
E: proteintech@ptglab.com
W: ptglab.com

This product is exclusively available under Proteintech Group brand and is not available to purchase from any other manufacturer.

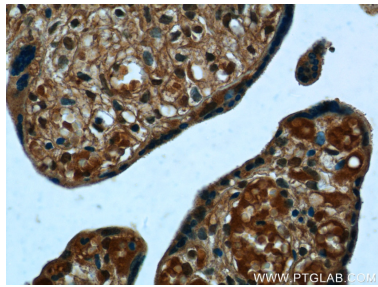
Selected Validation Data



mouse liver tissue were subjected to SDS PAGE followed by western blot with 13313-1-AP (PPBP,NAP2 antibody) at dilution of 1:300 incubated at room temperature for 1.5 hours. This data was developed using the same antibody clone with 13313-1-PBS in a different storage buffer formulation.



Immunohistochemical analysis of paraffin-embedded human placenta tissue slide using 13313-1-AP (PPBP,NAP2 antibody at dilution of 1:50 (under 10x lens). This data was developed using the same antibody clone with 13313-1-PBS in a different storage buffer formulation.



Immunohistochemical analysis of paraffin-embedded human placenta tissue slide using 13313-1-AP (PPBP,NAP2 antibody at dilution of 1:50 (under 40x lens). This data was developed using the same antibody clone with 13313-1-PBS in a different storage buffer formulation.