

For Research Use Only

GMEB2 Polyclonal antibody

Catalog Number: 13314-1-AP



Basic Information

Catalog Number: 13314-1-AP	GenBank Accession Number: BC036305	Purification Method: Antigen affinity purification
Size: 150ul , Concentration: 650 µg/ml by Nanodrop;	GeneID (NCBI): 26205	Recommended Dilutions: WB 1:500-1:1000 IHC 1:20-1:200 IF 1:50-1:500
Source: Rabbit	Full Name: glucocorticoid modulatory element binding protein 2	
Isotype: IgG	Calculated MW: 530 aa, 56 kDa	
Immunogen Catalog Number: AG4157	Observed MW: 65-70 kDa	

Applications

Tested Applications:

IF, IHC, WB, ELISA

Species Specificity:

human, mouse, rat

Note-IHC: suggested antigen retrieval with TE buffer pH 9.0; (*) Alternatively, antigen retrieval may be performed with citrate buffer pH 6.0

Positive Controls:

WB : human placenta tissue, mouse ovary tissue, mouse thymus tissue

IHC : human cervical cancer tissue,

IF : MCF-7 cells,

Background Information

GMEB2, also named as Glucocorticoid modulatory element-binding protein 2, is a 530 amino acid protein, which is expressed in peripheral blood lymphocytes and fetal liver. GMEB2 as a trans-acting factor that binds to glucocorticoid modulatory elements (GME) present in the TAT (tyrosine aminotransferase) promoter and increases sensitivity to low concentrations of glucocorticoids. The calculated molecular weight of GMEB2 is 56 kDa, but modified GMEB2 is about 65-70 kDa.

Storage

Storage:

Store at -20°C. Stable for one year after shipment.

Storage Buffer:

PBS with 0.02% sodium azide and 50% glycerol pH 7.3.

Aliquoting is unnecessary for -20°C storage

*** 20ul sizes contain 0.1% BSA

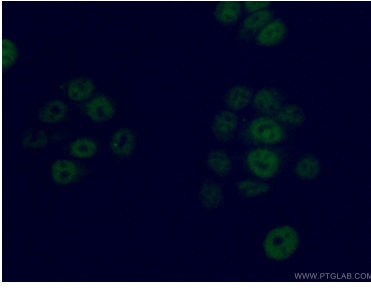
For technical support and original validation data for this product please contact:

T: 1 (888) 4PTGLAB (1-888-478-4522) (toll free in USA), or 1(312) 455-8498 (outside USA)

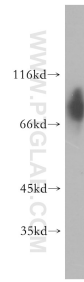
E: proteintech@ptglab.com
W: ptglab.com

This product is exclusively available under Proteintech Group brand and is not available to purchase from any other manufacturer.

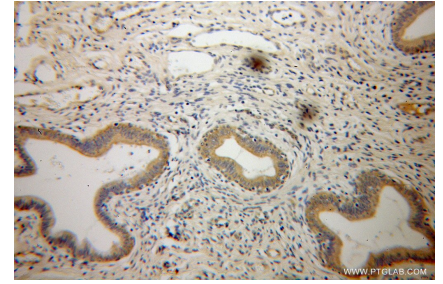
Selected Validation Data



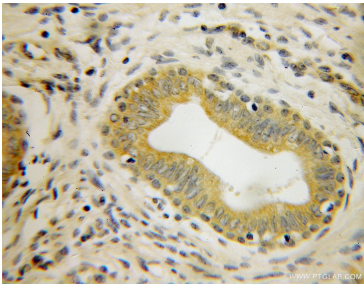
Immunofluorescent analysis of (4% PFA) fixed MCF-7 cells using 13314-1-AP (GMEB2 antibody) at dilution of 1:50 and Alexa Fluor 488-conjugated AffiniPure Goat Anti-Rabbit IgG(H+L).



human placenta tissue were subjected to SDS PAGE followed by western blot with 13314-1-AP (GMEB2 antibody) at dilution of 1:300 incubated at room temperature for 1.5 hours.



Immunohistochemical analysis of paraffin-embedded human cervical cancer using 13314-1-AP (GMEB2 antibody) at dilution of 1:100 (under 10x lens).



Immunohistochemical analysis of paraffin-embedded human cervical cancer using 13314-1-AP (GMEB2 antibody) at dilution of 1:100 (under 40x lens).