

For Research Use Only

GMEB2 Polyclonal antibody, PBS Only

Catalog Number: 13314-1-PBS



Basic Information

Catalog Number: 13314-1-PBS	GenBank Accession Number: BC036305	Purification Method: Antigen affinity purification
Size: 100ug, Concentration: 1 mg/ml by Nanodrop;	GeneID (NCBI): 26205	
Source: Rabbit	UNIPROT ID: Q9UKD1	
Isotype: IgG	Full Name: glucocorticoid modulatory element binding protein 2	
Immunogen Catalog Number: AG4157	Calculated MW: 530 aa, 56 kDa	
	Observed MW: 65-70 kDa	

Applications

Tested Applications:
WB, IHC, IF/ICC, Indirect ELISA

Species Specificity:
human, mouse, rat

Background Information

GMEB2, also named as Glucocorticoid modulatory element-binding protein 2, is a 530 amino acid protein, which is expressed in peripheral blood lymphocytes and fetal liver. GMEB2 as a trans-acting factor that binds to glucocorticoid modulatory elements (GME) present in the TAT (tyrosine aminotransferase) promoter and increases sensitivity to low concentrations of glucocorticoids. The calculated molecular weight of GMEB2 is 56 kDa, but modified GMEB2 is about 65-70 kDa.

Storage

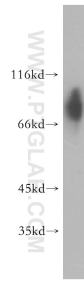
Storage:
Store at -80°C.

Storage Buffer:
PBS Only

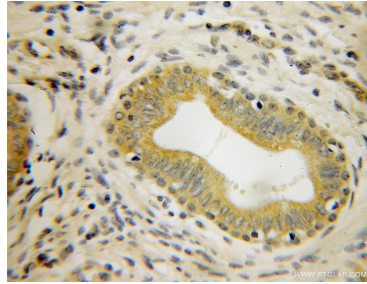
For technical support and original validation data for this product please contact:
T: 1 (888) 4PTGLAB (1-888-478-4522) (toll free in USA), or 1(312) 455-8498 (outside USA) E: proteintech@ptglab.com W: ptglab.com

This product is exclusively available under Proteintech Group brand and is not available to purchase from any other manufacturer.

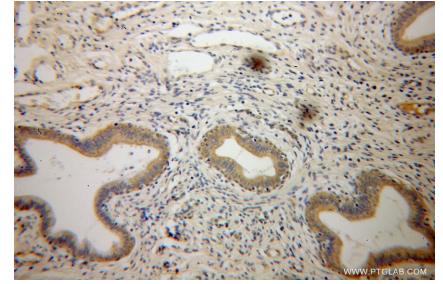
Selected Validation Data



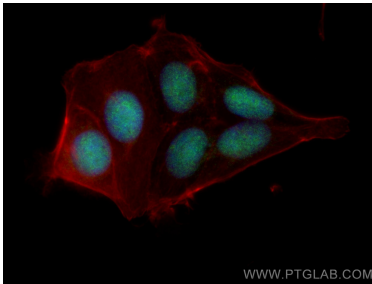
human placenta tissue were subjected to SDS PAGE followed by western blot with 13314-1-AP (GMEB2 antibody) at dilution of 1:300 incubated at room temperature for 1.5 hours. This data was developed using the same antibody clone with 13314-1-PBS in a different storage buffer formulation.



Immunohistochemical analysis of paraffin-embedded human cervical cancer using 13314-1-AP (GMEB2 antibody) at dilution of 1:100 (under 40x lens). This data was developed using the same antibody clone with 13314-1-PBS in a different storage buffer formulation.



Immunohistochemical analysis of paraffin-embedded human cervical cancer using 13314-1-AP (GMEB2 antibody) at dilution of 1:100 (under 10x lens). This data was developed using the same antibody clone with 13314-1-PBS in a different storage buffer formulation.



Immunofluorescent analysis of (4% PFA) fixed MCF-7 cells using GMEB2 antibody (13314-1-AP) at dilution of 1:400 and CoralLite@488-Conjugated AffiniPure Goat Anti-Rabbit IgG(H+L), CL594-Phalloidin (red). This data was developed using the same antibody clone with 13314-1-PBS in a different storage buffer formulation.