

For Research Use Only

SLD5 Polyclonal antibody, PBS Only

Catalog Number: 13315-1-PBS



Basic Information

Catalog Number: 13315-1-PBS	GenBank Accession Number: BC027454	Purification Method: Antigen affinity purification
Size: 100ug, Concentration: 1 mg/ml by Nanodrop;	GeneID (NCBI): 84296	
Source: Rabbit	UNIPROT ID: Q9BRT9	
Isotype: IgG	Full Name: GINS complex subunit 4 (Sld5 homolog)	
Immunogen Catalog Number: AG4158	Calculated MW: 223 aa, 26 kDa	
	Observed MW: 26 kDa	

Applications

Tested Applications:
WB, IF/ICC, Indirect ELISA

Species Specificity:
human, mouse

Background Information

SLD5 (DNA replication complex GINS protein SLD5) is also named as GINS4 (GINS complex subunit 4). SLD5 is required for correct functioning of the GINS complex, a complex that plays an essential role in the initiation of DNA replication, and progression of DNA replication forks (PMID: 17417653). SLD5 forms a GINS complex with PSF1, PSF2 and PSF3, which is essential for the initiation of DNA replication in lower eukaryotes (PMID: 24244394). SLD5 is a member of the GINS complex, essential for DNA replication in eukaryotes. It has been reported that SLD5 is involved in early embryogenesis in the mouse, and cell cycle progression and genome integrity in Drosophila (PMID: 27499248).

Storage

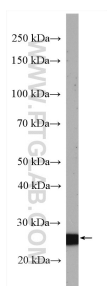
Storage:
Store at -80°C.

Storage Buffer:
PBS Only

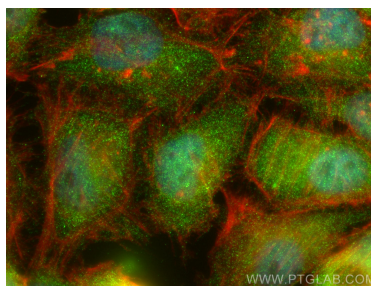
For technical support and original validation data for this product please contact:
T: 1 (888) 4PTGLAB (1-888-478-4522) (toll free in USA), or 1(312) 455-8498 (outside USA)
E: proteintech@ptglab.com
W: ptglab.com

This product is exclusively available under Proteintech Group brand and is not available to purchase from any other manufacturer.

Selected Validation Data



mouse thymus tissue were subjected to SDS PAGE followed by western blot with 13315-1-AP (SLD5 antibody) at dilution of 1:300 incubated at room temperature for 1.5 hours. This data was developed using the same antibody clone with 13315-1-PBS in a different storage buffer formulation.



Immunofluorescent analysis of (4% PFA) fixed HeLa cells using SLD5 antibody (13315-1-AP) at dilution of 1:400 and Multi-rAb CoraLite® Plus 488-Goat Anti-Rabbit Recombinant Secondary Antibody (H+L) (RGAR002), CL594-phalloidin (red). This data was developed using the same antibody clone with 13315-1-PBS in a different storage buffer formulation.