

For Research Use Only

CSDE1 Polyclonal antibody, PBS Only

Catalog Number: 13319-1-PBS

Featured Product



Basic Information

Catalog Number:

13319-1-PBS

Size:

100ug, Concentration: 1 mg/ml by Nanodrop;

Source:

Rabbit

Isotype:

IgG

Immunogen Catalog Number:

AG4173

GenBank Accession Number:

BC032446

GeneID (NCBI):

7812

UNIPROT ID:

O75534

Full Name:

cold shock domain containing E1, RNA-binding

Calculated MW:

798 aa, 89 kDa

Observed MW:

89 kDa

Purification Method:

Antigen affinity purification

Applications

Tested Applications:

WB, IHC, IF/ICC, ELISA

Species Specificity:

human, mouse

Background Information

CSDE1 (Cold shock domain-containing protein E1), also known as UNR (upstream of N-ras), is an RNA-binding protein involved in the regulation of messenger RNA stability and internal initiation of translation. It is required for internal initiation of translation of human rhinovirus RNA. UNR may be involved in translationally coupled mRNA turnover. Reduced expression of UNR impairs proliferation and differentiation of erythroid blasts. Recent study found that UNR acts as a positive or negative regulator of cell death, depending on the cell type, suggesting manipulation of UNR level may constitute a specific approach to sensitize cancer cells to anticancer treatments.

Storage

Storage:

Store at -80°C.

Storage Buffer:

PBS Only

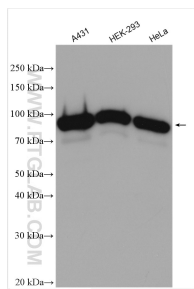
For technical support and original validation data for this product please contact:

T: 1 (888) 4PTGLAB (1-888-478-4522) (toll free in USA), or 1(312) 455-8498 (outside USA)

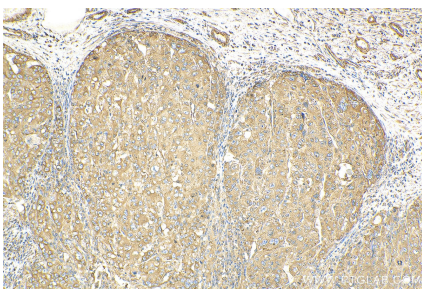
E: proteintech@ptglab.com
W: ptglab.com

This product is exclusively available under Proteintech Group brand and is not available to purchase from any other manufacturer.

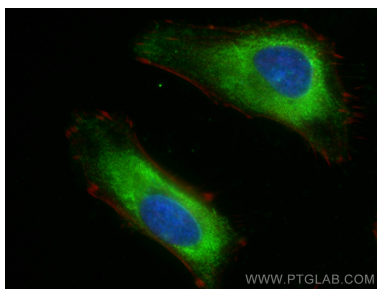
Selected Validation Data



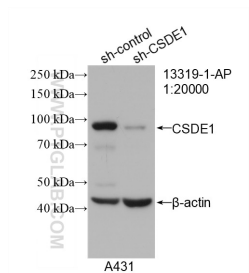
Various lysates were subjected to SDS PAGE followed by western blot with 13319-1-AP (CSDE1 antibody) at dilution of 1:7000 incubated at room temperature for 1.5 hours. This data was developed using the same antibody clone with 13319-1-PBS in a different storage buffer formulation.



Immunohistochemical analysis of paraffin-embedded human liver cancer tissue slide using 13319-1-AP (CSDE1 antibody) at dilution of 1:200 (under 10x lens). Heat mediated antigen retrieval with Tris-EDTA buffer (pH 9.0). This data was developed using the same antibody clone with 13319-1-PBS in a different storage buffer formulation.



Immunofluorescent analysis of (-20°C Ethanol) fixed HeLa cells using CSDE1 antibody (13319-1-AP) at dilution of 1:200 and CoraLite®488-Conjugated AffiniPure Goat Anti-Rabbit IgG(H+L), CL594-Phalloidin (red). This data was developed using the same antibody clone with 13319-1-PBS in a different storage buffer formulation.



WB result of CSDE1 antibody (13319-1-AP; 1:20000; incubated at room temperature for 1.5 hours) with sh-Control and sh-CSDE1 transfected A431 cells. This data was developed using the same antibody clone with 13319-1-PBS in a different storage buffer formulation.