

For Research Use Only

CGREF1 Polyclonal antibody

Catalog Number: 13323-1-AP



Basic Information

Catalog Number:

13323-1-AP

Size:

150ul, Concentration: 450 ug/ml by Nanodrop;

Source:

Rabbit

Isotype:

IgG

Immunogen Catalog Number:

AG3985

GenBank Accession Number:

BC034764

GeneID (NCBI):

10669

UNIPROT ID:

Q99674

Full Name:

cell growth regulator with EF-hand domain 1

Calculated MW:

301 aa, 32 kDa

Observed MW:

22 kDa

Purification Method:

Antigen affinity purification

Recommended Dilutions:

WB 1:500-1:2000

Applications

Tested Applications:

WB, ELISA

Species Specificity:

human, mouse, rat

Positive Controls:

WB : mouse brain tissue, rat brain tissue

Background Information

CGREF1, also known as CGR11, is predicted to enable calcium ion binding activity and to be involved in negative regulation of cell population proliferation. Human GREF1 protein has 4 clustered 17-amino acid repeats within the C terminus, suggesting a structure resembling 4 alpha-helical domains interrupted by distinct turns. Northern blot analysis of rat tissues demonstrated expression of CGR11 predominantly in the whole brain and kidney, with limited expression in heart, lung, liver, and skeletal muscle and no expression in spleen and testis.

Storage

Storage:

Store at -20°C. Stable for one year after shipment.

Storage Buffer:

PBS with 0.02% sodium azide and 50% glycerol pH 7.3.

Aliquoting is unnecessary for -20°C storage

*** 20ul sizes contain 0.1% BSA

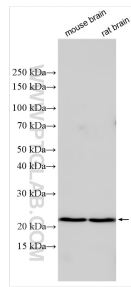
For technical support and original validation data for this product please contact:

T: 1 (888) 4PTGLAB (1-888-478-4522) (toll free in USA), or 1(312) 455-8498 (outside USA)

E: proteintech@ptglab.com
W: ptglab.com

This product is exclusively available under Proteintech Group brand and is not available to purchase from any other manufacturer.

Selected Validation Data



Various lysates were subjected to SDS PAGE followed by western blot with 13323-1-AP (CGREF1 antibody) at dilution of 1:1000 incubated at room temperature for 1.5 hours.