

For Research Use Only

CD300LF Polyclonal antibody

Catalog Number: 13334-1-AP

2 Publications



Basic Information

Catalog Number:

13334-1-AP

Size:

150ul, Concentration: 650 ug/ml by Nanodrop and 300 ug/ml by Bradford method using BSA as the standard;

Source:

Rabbit

Isotype:

IgG

Immunogen Catalog Number:

AG4150

GenBank Accession Number:

BC028199

GeneID (NCBI):

146722

UNIPROT ID:

Q8TDQ1

Full Name:

CD300 molecule-like family member f

Calculated MW:

290 aa, 32 kDa

Observed MW:

30-34 kDa

Purification Method:

Antigen affinity purification

Recommended Dilutions:

WB 1:500-1:1000

IP 0.5-4.0 ug for 1.0-3.0 mg of total protein lysate

Applications

Tested Applications:

WB, IP, ELISA

Cited Applications:

WB

Species Specificity:

human

Cited Species:

human

Positive Controls:

WB : Jurkat cells, U-937 cells

IP : K-562 cells,

Background Information

CD300LF, also known as CLM1 (CMRF35-like molecule 1), is a member of the CD300 protein family. Members of this family are cell surface glycoproteins with a single IgV-like extracellular domain, and are involved in the regulation of immune response. CD300LF is an inhibitory receptor that has been shown to inhibit various inflammatory processes in myeloid cells, such as macrophages and mast cells.

Notable Publications

Author	Pubmed ID	Journal	Application
Dmitry N Grigoryev	26285698	BMC Pulm Med	WB
Chenrui Zhao	39398230	J Inflamm Res	WB

Storage

Storage:

Store at -20°C. Stable for one year after shipment.

Storage Buffer:

PBS with 0.02% sodium azide and 50% glycerol pH 7.3.

Aliquoting is unnecessary for -20°C storage

*** 20ul sizes contain 0.1% BSA

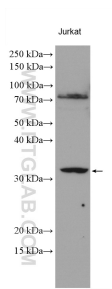
For technical support and original validation data for this product please contact:

T: 1 (888) 4PTGLAB (1-888-478-4522) (toll free in USA), or 1(312) 455-8498 (outside USA)

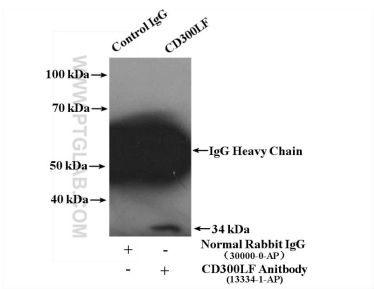
E: proteintech@ptglab.com
W: ptglab.com

This product is exclusively available under Proteintech Group brand and is not available to purchase from any other manufacturer.

Selected Validation Data



Jurkat cells were subjected to SDS PAGE followed by western blot with 13334-1-AP (CD300LF antibody) at dilution of 1:500 incubated at room temperature for 1.5 hours.



IP result of anti-CD300LF (IP:13334-1-AP, 4ug; Detection:13334-1-AP 1:1500) with K-562 cells lysate 4000ug.