

For Research Use Only

KIR3DL1 Polyclonal antibody

Catalog Number: 13335-1-AP **1 Publications**



Basic Information

Catalog Number: 13335-1-AP	GenBank Accession Number: BC028206	Purification Method: Antigen affinity purification
Size: 150ul , Concentration: 350 µg/ml by Nanodrop and 233 µg/ml by Bradford method using BSA as the standard;	GeneID (NCBI): 3811	Recommended Dilutions: WB 1:500-1:1000
Source: Rabbit	Full Name: killer cell immunoglobulin-like receptor, three domains, long cytoplasmic tail, 1	
Isotype: IgG	Calculated MW: 444 aa, 49 kDa	
Immunogen Catalog Number: AG4152	Observed MW: 49 kDa	

Applications

Tested Applications: FC, WB, ELISA	Positive Controls: WB : human liver tissue,
Species Specificity: human	

Background Information

Killer cell immunoglobulin-like receptors (KIRs) are transmembrane glycoproteins expressed by natural killer cells and subsets of T cells. The KIR proteins are classified by the number of extracellular immunoglobulin domains (2D or 3D) and by whether they have a long (L) or short (S) cytoplasmic domain. KIR3DL1 is a receptor on natural killer (NK) cells for HLA Bw4 allele. It inhibits the activity of NK cells thus preventing cell lysis. KIR3DL1 and KIR3DS1 are highly homologous. This antibody is raised against 22-344 amino acids of human KIR3DL1 and recognizes both KIR3DL1 (49 kDa) and KIR3DS1 (43 kDa).

Notable Publications

Author	Pubmed ID	Journal	Application
Akihiro Doi	30421793	Clin Exp Immunol	

Storage

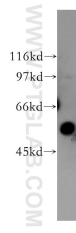
Storage:
Store at -20°C. Stable for one year after shipment.
Storage Buffer:
PBS with 0.02% sodium azide and 50% glycerol pH 7.3.
Aliquoting is unnecessary for -20°C storage

*** 20ul sizes contain 0.1% BSA

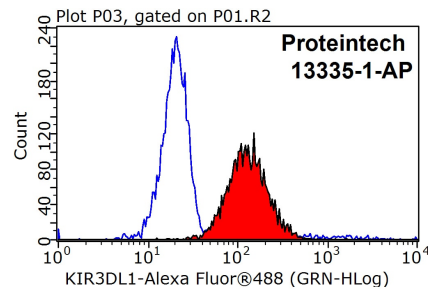
For technical support and original validation data for this product please contact:
T: 1 (888) 4PTGLAB (1-888-478-4522) (toll free in USA), or 1(312) 455-8498 (outside USA)
E: proteintech@ptglab.com
W: ptglab.com

This product is exclusively available under Proteintech Group brand and is not available to purchase from any other manufacturer.

Selected Validation Data



human liver tissue were subjected to SDS PAGE followed by western blot with 13335-1-AP (KIR3DL1 antibody) at dilution of 1:500 incubated at room temperature for 1.5 hours.



1×10^6 Jurkat cells were stained with 0.2ug KIR3DL1 antibody (13335-1-AP, red) and control antibody (blue). Fixed with 90% MeOH blocked with 3% BSA (30 min). Alexa Fluor 488-conjugated AffiniPure Goat Anti-Rabbit IgG(H+L) with dilution 1:1000.