

For Research Use Only

# KIR3DL1/CD158E Polyclonal antibody, PBS Only

Catalog Number: 13335-1-PBS



## Basic Information

**Catalog Number:**

13335-1-PBS

**Size:**

100ug, Concentration: 1 mg/ml by  
Nanodrop;

**Source:**

Rabbit

**Isotype:**

IgG

**Immunogen Catalog Number:**

AG4152

**GenBank Accession Number:**

BC028206

**GeneID (NCBI):**

3811

**UNIPROT ID:**

P43629

**Full Name:**

killer cell immunoglobulin-like  
receptor, three domains, long  
cytoplasmic tail, 1

**Calculated MW:**

444 aa, 49 kDa

**Observed MW:**

50 kDa

**Purification Method:**

Antigen affinity purification

## Applications

**Tested Applications:**

WB, Indirect ELISA

**Species Specificity:**

human

## Background Information

Killer cell immunoglobulin-like receptors (KIRs) are transmembrane glycoproteins expressed by natural killer cells and subsets of T cells. The KIR proteins are classified by the number of extracellular immunoglobulin domains (2D or 3D) and by whether they have a long (L) or short (S) cytoplasmic domain. KIR3DL1 is a receptor on natural killer (NK) cells for HLA Bw4 allele. It inhibits the activity of NK cells thus preventing cell lysis. KIR3DL1 and KIR3DS1 are highly homologous. This antibody is raised against 22-344 amino acids of human KIR3DL1 and recognizes both KIR3DL1 (49 kDa) and KIR3DS1 (43 kDa).

## Storage

**Storage:**

Store at -80°C.

**Storage Buffer:**

PBS only, pH7.3

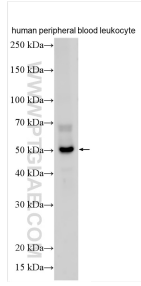
For technical support and original validation data for this product please contact:

T: 1 (888) 4PTGLAB (1-888-478-4522) (toll free  
in USA), or 1(312) 455-8498 (outside USA)

E: [proteintech@ptglab.com](mailto:proteintech@ptglab.com)  
W: [ptglab.com](http://ptglab.com)

**This product is exclusively available under Proteintech Group brand and is not available to purchase from any other manufacturer.**

## Selected Validation Data



human peripheral blood leukocytes were subjected to SDS PAGE followed by western blot with 13335-1-AP (KIR3DL1/CD158E antibody) at dilution of 1:500 incubated at room temperature for 1.5 hours. This data was developed using the same antibody clone with 13335-1-PBS in a different storage buffer formulation.