

For Research Use Only

# ADAMTSL1 Polyclonal antibody, PBS Only

Catalog Number: 13337-1-PBS



## Basic Information

<b>Catalog Number:</b> 13337-1-PBS	<b>GenBank Accession Number:</b> BC030262	<b>Purification Method:</b> Antigen affinity purification
<b>Size:</b> 100ug , Concentration: 1 mg/ml by Nanodrop;	<b>GeneID (NCBI):</b> 92949	
<b>Source:</b> Rabbit	<b>UNIPROT ID:</b> Q8N6G6	
<b>Isotype:</b> IgG	<b>Full Name:</b> ADAMTS-like 1	
<b>Immunogen Catalog Number:</b> AG4154	<b>Calculated MW:</b> 525 aa, 58 kDa	
	<b>Observed MW:</b> 70 kDa	

## Applications

**Tested Applications:**  
WB, Indirect ELISA

**Species Specificity:**  
human, mouse, rat

## Background Information

ADAMTS-like genes (ADAMTSLs) produce proteins similar to those encoded by ADAMTS genes, only without catalytic domains, and may be responsible for regulating activities of ADAMTS. ADAMTSL1 was first identified in 1997 and was called punctin. ADAMTSL1 is distinct from other genes in the ADAMTS family, and binds to the extracellular matrix in a spatially-specific manner. (PMID: 32095376)

## Storage

**Storage:**  
Store at -80°C.

**Storage Buffer:**  
PBS only, pH7.3

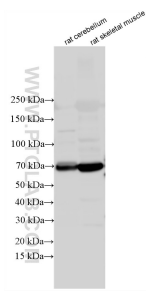
For technical support and original validation data for this product please contact:

T: 1 (888) 4PTGLAB (1-888-478-4522) (toll free in USA), or 1(312) 455-8498 (outside USA)

E: [proteintech@ptglab.com](mailto:proteintech@ptglab.com)  
W: [ptglab.com](http://ptglab.com)

**This product is exclusively available under Proteintech Group brand and is not available to purchase from any other manufacturer.**

## Selected Validation Data



Various lysates were subjected to SDS PAGE followed by western blot with 13337-1-AP (ADAMTSL1 antibody) at dilution of 1:800 incubated at room temperature for 1.5 hours. This data was developed using the same antibody clone with 13337-1-PBS in a different storage buffer formulation.