

For Research Use Only

GNA14 Polyclonal antibody, PBS Only

Catalog Number:13350-1-PBS



Basic Information

Catalog Number:

13350-1-PBS

Size:

100ug , Concentration: 1 mg/ml by Nanodrop;

Source:

Rabbit

Isotype:

IgG

Immunogen Catalog Number:

AG3930

GenBank Accession Number:

BC027886

GeneID (NCBI):

9630

UNIPROT ID:

O95837

Full Name:

guanine nucleotide binding protein (G protein), alpha 14

Calculated MW:

355 aa, 42 kDa

Observed MW:

42 kDa

Purification Method:

Antigen affinity purification

Applications

Tested Applications:

WB, IHC, IF/ICC, Indirect ELISA

Species Specificity:

human, mouse

Storage

Storage:

Store at -80°C.

Storage Buffer:

PBS Only

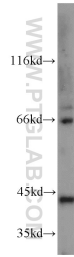
For technical support and original validation data for this product please contact:

T: 1 (888) 4PTGLAB (1-888-478-4522) (toll free in USA), or 1(312) 455-8498 (outside USA)

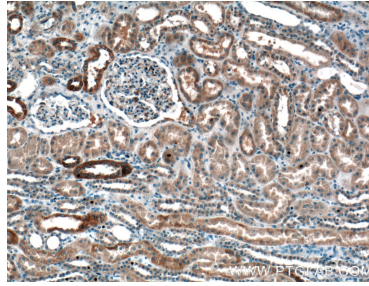
E: proteintech@ptglab.com
W: ptglab.com

This product is exclusively available under Proteintech Group brand and is not available to purchase from any other manufacturer.

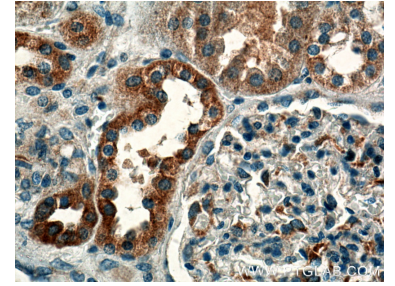
Selected Validation Data



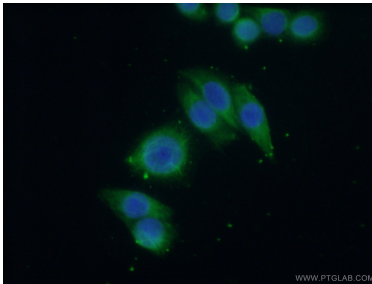
mouse lung tissue were subjected to SDS PAGE followed by western blot with 13350-1-AP (GNA14 antibody) at dilution of 1:600 incubated at room temperature for 1.5 hours. This data was developed using the same antibody clone with 13350-1-PBS in a different storage buffer formulation.



Immunohistochemical analysis of paraffin-embedded human kidney tissue slide using 13350-1-AP (GNA14 Antibody) at dilution of 1:200 (under 10x lens). This data was developed using the same antibody clone with 13350-1-PBS in a different storage buffer formulation.



Immunohistochemical analysis of paraffin-embedded human kidney tissue slide using 13350-1-AP (GNA14 Antibody) at dilution of 1:200 (under 40x lens). This data was developed using the same antibody clone with 13350-1-PBS in a different storage buffer formulation.



Immunofluorescent analysis of (-20°C Ethanol) fixed HeLa cells using 13350-1-AP (GNA14 antibody) at dilution of 1:50 and Alexa Fluor 488-conjugated AffiniPure Goat Anti-Rabbit IgG(H+L). This data was developed using the same antibody clone with 13350-1-PBS in a different storage buffer formulation.