

For Research Use Only

RAD17 Polyclonal antibody

Catalog Number: 13358-1-AP

Featured Product

3 Publications



Basic Information

Catalog Number:

13358-1-AP

Size:

150ul, Concentration: 600 ug/ml by Nanodrop and 333 ug/ml by Bradford method using BSA as the standard;

Source:

Rabbit

Isotype:

IgG

Immunogen Catalog Number:

AG4171

GenBank Accession Number:

BC032304

GeneID (NCBI):

5884

UNIPROT ID:

O75943

Full Name:

RAD17 homolog (S. pombe)

Calculated MW:

681 aa, 71 kDa

Observed MW:

71 kDa

Purification Method:

Antigen affinity purification

Recommended Dilutions:

WB 1:1000-1:6000

IHC 1:20-1:200

IF/ICC 1:50-1:500

Applications

Tested Applications:

WB, IHC, IF/ICC, FC (Intra), ELISA

Cited Applications:

WB

Species Specificity:

human

Cited Species:

human, mouse

Positive Controls:

WB : K-562 cells, Raji cells

IHC : human breast cancer tissue,

IF/ICC : HeLa cells,

Note-IHC: suggested antigen retrieval with *TE buffer pH 9.0*; (*) Alternatively, antigen retrieval may be performed with *citrate buffer pH 6.0*

Notable Publications

Author	Pubmed ID	Journal	Application
Jill E Hunter	36240066	Biochem J	WB
Jill E Hunter	36240065	Biochem J	WB
Emily M Schleicher	35717336	Oncogenesis	WB

Storage

Storage:

Store at -20°C. Stable for one year after shipment.

Storage Buffer:

PBS with 0.02% sodium azide and 50% glycerol pH 7.3.

Aliquoting is unnecessary for -20°C storage

*** 20ul sizes contain 0.1%BSA

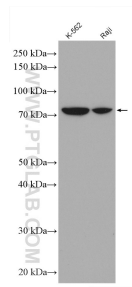
For technical support and original validation data for this product please contact:

T: 1 (888) 4PTGLAB (1-888-478-4522) (toll free in USA), or 1(312) 455-8498 (outside USA)

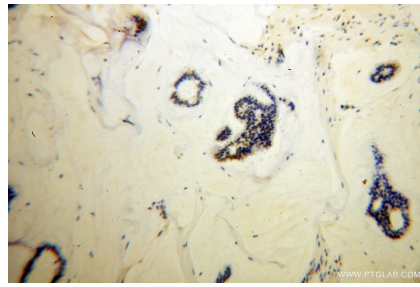
E: proteintech@ptglab.com
W: ptglab.com

This product is exclusively available under Proteintech Group brand and is not available to purchase from any other manufacturer.

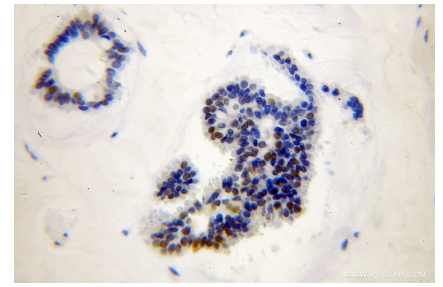
Selected Validation Data



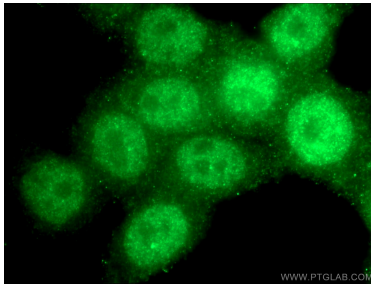
Various lysates were subjected to SDS PAGE followed by western blot with 13358-1-AP (RAD17 antibody) at dilution of 1:3000 incubated at room temperature for 1.5 hours.



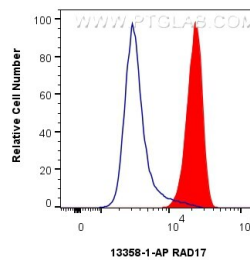
Immunohistochemical analysis of paraffin-embedded human breast cancer using 13358-1-AP (RAD17 antibody) at dilution of 1:100 (under 10x lens).



Immunohistochemical analysis of paraffin-embedded human breast cancer using 13358-1-AP (RAD17 antibody) at dilution of 1:100 (under 40x lens).



Immunofluorescent analysis of (4% PFA) fixed HeLa cells using 13358-1-AP (RAD17 antibody) at dilution of 1:50 and Alexa Fluor 488-conjugated AffiniPure Goat Anti-Rabbit IgG(H+L).



1×10^6 A431 cells were intracellularly stained with 0.25 μ g RAD17 Polyclonal antibody (13358-1-AP) and CoraLite® 488-Conjugated Goat Anti-Rabbit IgG(H+L) (SA00013-2)(red), or 0.25 μ g Rabbit IgG control Rabbit PolyAb (30000-0-AP) (blue). Cells were fixed and permeabilized with Transcription Factor Staining Buffer Kit (PF00011).