

For Research Use Only

RAD17 Polyclonal antibody, PBS Only

Catalog Number: 13358-1-PBS

Featured Product



Basic Information

Catalog Number:

13358-1-PBS

Size:

100ug, Concentration: 1 mg/ml by
Nanodrop;

Source:

Rabbit

Isotype:

IgG

Immunogen Catalog Number:

AG4171

GenBank Accession Number:

BC032304

GeneID (NCBI):

5884

UNIPROT ID:

O75943

Full Name:

RAD17 homolog (S. pombe)

Calculated MW:

681 aa, 71 kDa

Observed MW:

71 kDa

Purification Method:

Antigen affinity purification

Applications

Tested Applications:

WB, IHC, IF/ICC, FC (Intra), Indirect ELISA

Species Specificity:

human

Storage

Storage:

Store at -80°C.

Storage Buffer:

PBS Only

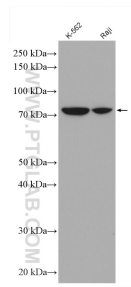
For technical support and original validation data for this product please contact:

T: 1 (888) 4PTGLAB (1-888-478-4522) (toll free
in USA), or 1(312) 455-8498 (outside USA)

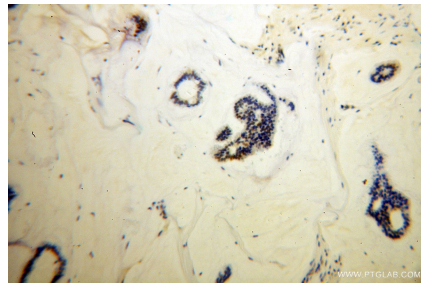
E: proteintech@ptglab.com
W: ptglab.com

This product is exclusively available under Proteintech Group brand and is not available to purchase from any other manufacturer.

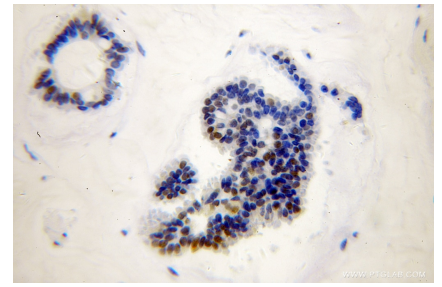
Selected Validation Data



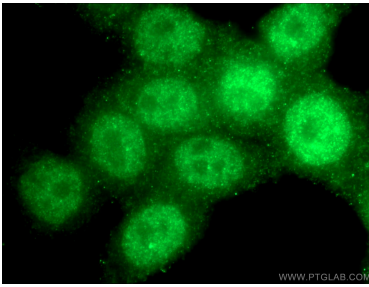
Various lysates were subjected to SDS PAGE followed by western blot with 13358-1-AP (RAD17 antibody) at dilution of 1:3000 incubated at room temperature for 1.5 hours. This data was developed using the same antibody clone with 13358-1-PBS in a different storage buffer formulation.



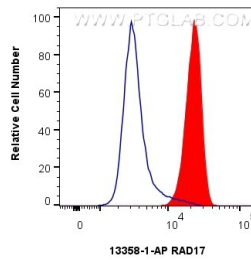
Immunohistochemical analysis of paraffin-embedded human breast cancer using 13358-1-AP (RAD17 antibody) at dilution of 1:100 (under 10x lens). This data was developed using the same antibody clone with 13358-1-PBS in a different storage buffer formulation.



Immunohistochemical analysis of paraffin-embedded human breast cancer using 13358-1-AP (RAD17 antibody) at dilution of 1:100 (under 40x lens). This data was developed using the same antibody clone with 13358-1-PBS in a different storage buffer formulation.



Immunofluorescent analysis of (4% PFA) fixed HeLa cells using 13358-1-AP (RAD17 antibody) at dilution of 1:50 and Alexa Fluor 488-conjugated AffiniPure Goat Anti-Rabbit IgG(H+L). This data was developed using the same antibody clone with 13358-1-PBS in a different storage buffer formulation.



1×10^6 A431 cells were intracellularly stained with 0.25 ug RAD17 Polyclonal antibody (13358-1-AP) and CoraLite® 488-Conjugated Goat Anti-Rabbit IgG(H+L) (SA00013-2)(red), or 0.25 ug Rabbit IgG control Rabbit PolyAb (30000-0-AP) (blue). Cells were fixed and permeabilized with Transcription Factor Staining Buffer Kit (PF00011). This data was developed using the same antibody clone with 13358-1-PBS in a different storage buffer formulation.