

For Research Use Only

# NAT10 Polyclonal antibody

Catalog Number: 13365-1-AP

Featured Product

43 Publications



## Basic Information

### Catalog Number:

13365-1-AP

### Size:

150ul, Concentration: 500 µg/ml by Nanodrop;

### Source:

Rabbit

### Isotype:

IgG

### Immunogen Catalog Number:

AG4184

### GenBank Accession Number:

BC035558

### GeneID (NCBI):

55226

### UNIPROT ID:

Q9H0A0

### Full Name:

N-acetyltransferase 10 (GCN5-related)

### Calculated MW:

1025 aa, 116 kDa

### Observed MW:

116 kDa

### Purification Method:

Antigen affinity purification

### Recommended Dilutions:

WB 1:5000-1:50000

IP 0.5-4.0 µg for 1.0-3.0 mg of total protein lysate

IF 1:200-1:800

## Applications

### Tested Applications:

IF, IP, WB, ELISA

### Cited Applications:

CoIP, IF, IHC, IP, RIP, WB

### Species Specificity:

human, mouse, rat

### Cited Species:

human, rat, mouse

### Positive Controls:

WB: A549 cells, HeLa cells, NIH/3T3 cells

IP: mouse testis tissue,

IF: HeLa cells,

## Background Information

NAT10 (N-acetyltransferase 10) is a nucleolar protein that is involved in regulation of telomerase activity, DNA damage response, and cytokinesis. It also plays a role in maintaining nuclear shape. Inhibition of NAT10 has been reported to rescue the misshapen nuclei in laminopathic cells via microtubule reorganization. The specificity of this antibody has been tested by siRNA. (24786082)

## Notable Publications

Author	Pubmed ID	Journal	Application
Xin-Hang Dong	34786056	Am J Transl Res	WB
Mingrui Zhai	36496983	Cells	WB
Daniel Arango	30449621	Cell	WB,IP

## Storage

### Storage:

Store at -20°C. Stable for one year after shipment.

### Storage Buffer:

PBS with 0.02% sodium azide and 50% glycerol pH 7.3.

Aliquoting is unnecessary for -20°C storage

\*\*\* 20ul sizes contain 0.1% BSA

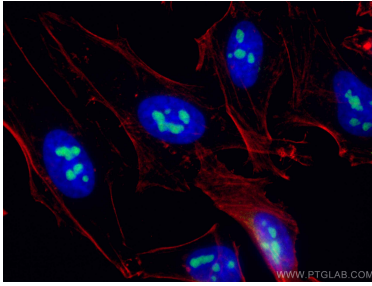
For technical support and original validation data for this product please contact:

T: 1 (888) 4PTGLAB (1-888-478-4522) (toll free in USA), or 1(312) 455-8498 (outside USA)

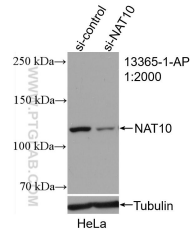
E: proteintech@ptglab.com  
W: ptglab.com

This product is exclusively available under Proteintech Group brand and is not available to purchase from any other manufacturer.

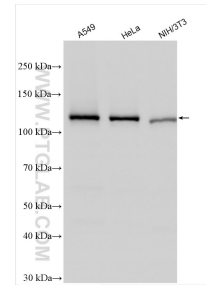
## Selected Validation Data



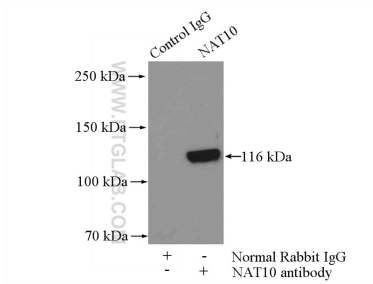
Immunofluorescent analysis of (4% PFA) fixed HeLa cells using NAT10 antibody (13365-1-AP) at dilution of 1:400 and CoraLite®488-Conjugated AffiniPure Goat Anti-Rabbit IgG(H+L), CL594-Phalloidin (red).



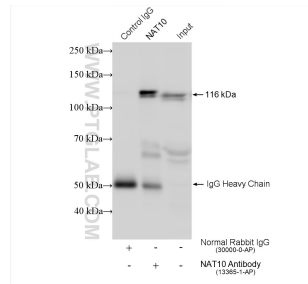
WB result of NAT10 antibody (13365-1-AP; 1:2000; incubated at room temperature for 1.5 hours) with sh-Control and sh-NAT10 transfected HeLa cells.



Various lysates were subjected to SDS PAGE followed by western blot with 13365-1-AP (NAT10 antibody) at dilution of 1:10000 incubated at room temperature for 1.5 hours.



IP result of anti-NAT10 (IP:13365-1-AP, 2ug; Detection:13365-1-AP 1:500) with mouse testis tissue lysate 4000ug.



IP result of anti-NAT10 (IP:13365-1-AP, 4ug; Detection:13365-1-AP 1:4000) with mouse testis tissue lysate 1120 ug.