

For Research Use Only

RALGPS1 Polyclonal antibody

Catalog Number: 13368-1-AP



Basic Information

Catalog Number: 13368-1-AP	GenBank Accession Number: BC032372	Purification Method: Antigen affinity purification
Size: 150ul , Concentration: 450 µg/ml by Nanodrop and 267 µg/ml by Bradford method using BSA as the standard;	GeneID (NCBI): 9649	Recommended Dilutions: WB 1:500-1:1000
Source: Rabbit	Full Name: Ral GEF with PH domain and SH3 binding motif 1	
Isotype: IgG	Calculated MW: 305 aa, 35 kDa	
Immunogen Catalog Number: AG4187	Observed MW: 62 kDa	

Applications

Tested Applications: WB,ELISA	Positive Controls: WB : mouse kidney tissue,
Species Specificity: human, mouse	

Background Information

Storage

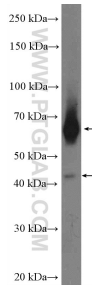
Storage:
Store at -20°C. Stable for one year after shipment.
Storage Buffer:
PBS with 0.02% sodium azide and 50% glycerol pH 7.3.
Aliquoting is unnecessary for -20°C storage

*** 20ul sizes contain 0.1% BSA

For technical support and original validation data for this product please contact:
T: 1 (888) 4PTGLAB (1-888-478-4522) (toll free in USA), or 1(312) 455-8498 (outside USA)
E: proteintech@ptglab.com
W: ptglab.com

This product is exclusively available under Proteintech Group brand and is not available to purchase from any other manufacturer.

Selected Validation Data



mouse kidney tissue were subjected to SDS PAGE followed by western blot with 13368-1-AP (RALGPS1 Antibody) at dilution of 1:600 incubated at room temperature for 1.5 hours.