

For Research Use Only

# SCFD2 Polyclonal antibody, PBS Only

Catalog Number:13375-1-PBS



## Basic Information

Catalog Number:

13375-1-PBS

Size:

100ug , Concentration: 1 mg/ml by Nanodrop;

Source:

Rabbit

Isotype:

IgG

Immunogen Catalog Number:

AG4197

GenBank Accession Number:

BC032453

GeneID (NCBI):

152579

UNIPROT ID:

Q8WU76

Full Name:

sec1 family domain containing 2

Calculated MW:

684 aa, 75 kDa

Observed MW:

70-75 kDa

Purification Method:

Antigen affinity purification

## Applications

Tested Applications:

WB, IHC, IP, Indirect ELISA

Species Specificity:

human, mouse, rat

## Storage

Storage:

Store at -80°C.

Storage Buffer:

PBS only, pH7.3

For technical support and original validation data for this product please contact:

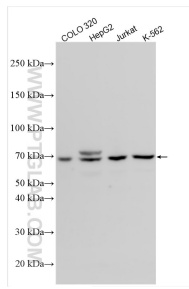
T: 1 (888) 4PTGLAB (1-888-478-4522) (toll free in USA), or 1(312) 455-8498 (outside USA)

E: [proteintech@ptglab.com](mailto:proteintech@ptglab.com)

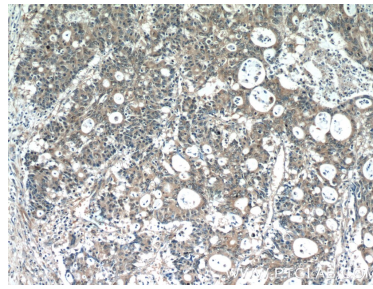
W: [ptglab.com](http://ptglab.com)

This product is exclusively available under Proteintech Group brand and is not available to purchase from any other manufacturer.

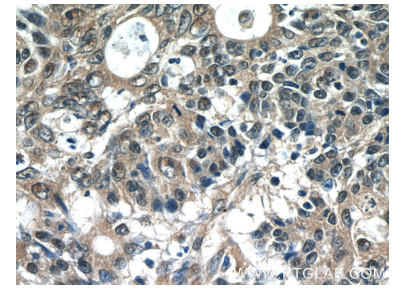
## Selected Validation Data



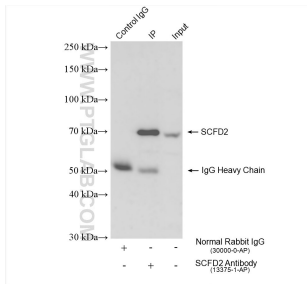
Various lysates were subjected to SDS PAGE followed by western blot with 13375-1-AP (SCFD2 antibody) at dilution of 1:1000 incubated at room temperature for 1.5 hours. This data was developed using the same antibody clone with 13375-1-PBS in a different storage buffer formulation.



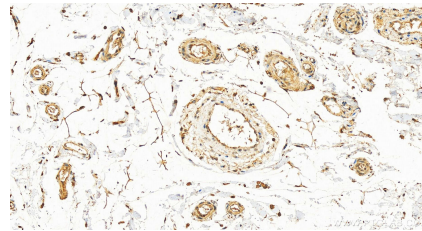
Immunohistochemical analysis of paraffin-embedded human colon cancer tissue slide using 13375-1-AP (SCFD2 Antibody) at dilution of 1:50 (under 10x lens). This data was developed using the same antibody clone with 13375-1-PBS in a different storage buffer formulation.



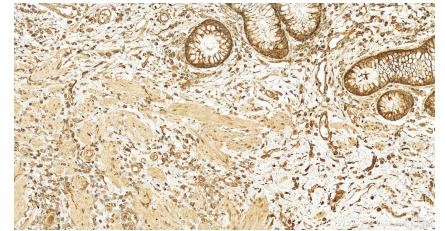
Immunohistochemical analysis of paraffin-embedded human colon cancer tissue slide using 13375-1-AP (SCFD2 Antibody) at dilution of 1:50 (under 40x lens). This data was developed using the same antibody clone with 13375-1-PBS in a different storage buffer formulation.



IP result of anti-SCFD2 (IP:13375-1-AP, 4ug; Detection:13375-1-AP 1:600) with COLO 320 cells lysate 1680 ug. This data was developed using the same antibody clone with 13375-1-PBS in a different storage buffer formulation.



Immunohistochemical analysis of paraffin-embedded human normal colon slide using 13375-1-AP (SCFD2 antibody) at dilution of 1:200 (under 20x lens). Heat mediated antigen retrieval with Tris-EDTA buffer (pH 9.0). This data was developed using the same antibody clone with 13375-1-PBS in a different storage buffer formulation.



Immunohistochemical analysis of paraffin-embedded human colon cancer tissue slide using 13375-1-AP (SCFD2 antibody) at dilution of 1:200 (under 20x lens). Heat mediated antigen retrieval with Tris-EDTA buffer (pH 9.0). This data was developed using the same antibody clone with 13375-1-PBS in a different storage buffer formulation.