

For Research Use Only

Siglec-9 Polyclonal antibody, PBS Only

Catalog Number: 13377-1-PBS



Basic Information

Catalog Number:

13377-1-PBS

Size:

100ug, Concentration: 1 mg/ml by Nanodrop;

Source:

Rabbit

Isotype:

IgG

Immunogen Catalog Number:

AG4201

GenBank Accession Number:

BC035365

GeneID (NCBI):

27180

UNIPROT ID:

Q9Y336

Full Name:

sialic acid binding Ig-like lectin 9

Calculated MW:

463 aa, 50 kDa

Observed MW:

55-60 kDa

Purification Method:

Antigen affinity purification

Applications

Tested Applications:

WB, IHC, IF-P, ELISA

Species Specificity:

human, mouse

Background Information

Sialic acid binding Ig-like lectin 9 (Siglec-9), also known as CD329, is a member of the Siglec family of glycan-recognition proteins. Siglec-9 is a type-I transmembrane protein consisting of an N-terminal extracellular region that contains an N-terminal V-set domain and two C2-set domains, a transmembrane region, and an intracellular domain with an immunoreceptor tyrosine-based inhibitory motif (ITIM) and an ITIM-like motif (PMID: 10801862). It is expressed quite broadly among human blood leukocytes, including monocytes, neutrophils, B cells, NK cells, and minor subsets of T cells (PMID: 32322597). Siglec-9 functions as an inhibitory immune checkpoint and can be targeted to enhance therapeutic antitumor immunity (PMID: 34155121; 37460871).

Storage

Storage:

Store at -80°C.

Storage Buffer:

PBS only, pH7.3

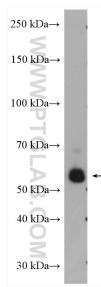
For technical support and original validation data for this product please contact:

T: 1 (888) 4PTGLAB (1-888-478-4522) (toll free in USA), or 1(312) 455-8498 (outside USA)

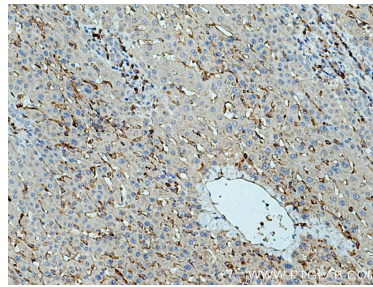
E: proteintech@ptglab.com
W: ptglab.com

This product is exclusively available under Proteintech Group brand and is not available to purchase from any other manufacturer.

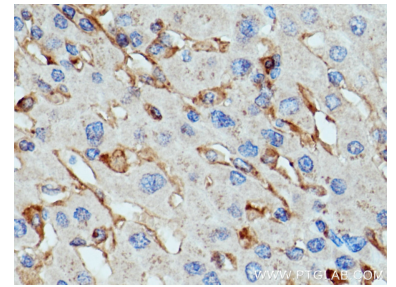
Selected Validation Data



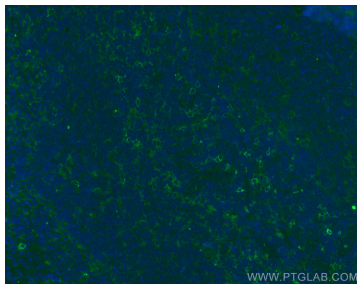
HL-60 cells were subjected to SDS PAGE followed by western blot with 13377-1-AP (Siglec-9 antibody) at dilution of 1:600 incubated at room temperature for 1.5 hours. This data was developed using the same antibody clone with 13377-1-PBS in a different storage buffer formulation.



Immunohistochemical analysis of paraffin-embedded human liver cancer tissue slide using 13377-1-AP (Siglec-9 antibody) at dilution of 1:200 (under 10x lens). Heat mediated antigen retrieval with Tris-EDTA buffer (pH 9.0). This data was developed using the same antibody clone with 13377-1-PBS in a different storage buffer formulation.



Immunohistochemical analysis of paraffin-embedded human liver cancer tissue slide using 13377-1-AP (Siglec-9 antibody) at dilution of 1:200 (under 40x lens). Heat mediated antigen retrieval with Tris-EDTA buffer (pH 9.0). This data was developed using the same antibody clone with 13377-1-PBS in a different storage buffer formulation.



Immunofluorescent analysis of (4% PFA) fixed paraffin-embedded human tonsillitis tissue using Siglec-9 antibody (13377-1-AP) at dilution of 1:200 and CoraLite®488-Conjugated Goat Anti-Rabbit IgG(H+L) (SA00013-2). Heat mediated antigen retrieval with Tris-EDTA buffer (pH 9.0). This data was developed using the same antibody clone with 13377-1-PBS in a different storage buffer formulation.