

For Research Use Only

GLRX2 Polyclonal antibody

Catalog Number: 13381-1-AP

Featured Product

7 Publications



Basic Information

Catalog Number:

13381-1-AP

Size:

150ul, Concentration: 1000 ug/ml by Nanodrop;

Source:

Rabbit

Isotype:

IgG

Immunogen Catalog Number:

AG4218

GenBank Accession Number:

BC028113

GeneID (NCBI):

51022

UNIPROT ID:

Q9NS18

Full Name:

glutaredoxin 2

Calculated MW:

164 aa, 18 kDa

Observed MW:

16 kDa

Purification Method:

Antigen affinity purification

Recommended Dilutions:

WB 1:500-1:2000

IF/ICC 1:200-1:800

Applications

Tested Applications:

WB, IF/ICC, ELISA

Cited Applications:

WB

Species Specificity:

human, mouse, rat

Cited Species:

human, mouse, rat

Positive Controls:

WB : HGC-27 cells, MCF-7 cells

IF/ICC : MCF-7 cells,

Background Information

GLRX2 (Glutaredoxin-2) is also named as GRX2 and belongs to the glutaredoxin family. It facilitates the maintenance of cellular redox homeostasis upon treatment with apoptotic agents, thereby preventing cardiolipin oxidation and cytochrome C release. The GLRX2, which exists in a dynamic equilibrium of enzymatically active monomers and quiescent dimers, is a 16-kDa protein directed either to the nucleus or to the mitochondria through differential splicing of the first exon (PMID: 17121859). It has 2 isoforms produced by alternative splicing.

Notable Publications

| Author | Pubmed ID | Journal | Application |
|---------------|-----------|---------------------|-------------|
| Yasuko Manabe | 25205643 | J Physiol Sci | WB |
| Meiling Wu | 33794310 | Free Radic Biol Med | WB |
| Jian Wen | 32522629 | Brain Res | WB |

Storage

Storage:

Store at -20°C. Stable for one year after shipment.

Storage Buffer:

PBS with 0.02% sodium azide and 50% glycerol pH 7.3.

Aliquoting is unnecessary for -20°C storage

*** 20ul sizes contain 0.1% BSA

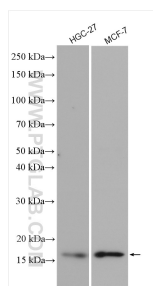
For technical support and original validation data for this product please contact:

T: 1 (888) 4PTGLAB (1-888-478-4522) (toll free in USA), or 1(312) 455-8498 (outside USA)

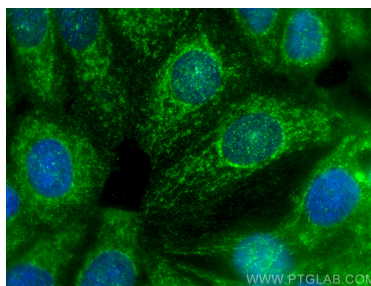
E: proteintech@ptglab.com
W: ptglab.com

This product is exclusively available under Proteintech Group brand and is not available to purchase from any other manufacturer.

Selected Validation Data



Various lysates were subjected to SDS PAGE followed by western blot with 13381-1-AP (GRLX2 antibody) at dilution of 1:1000 incubated at room temperature for 1.5 hours.



Immunofluorescent analysis of (4% PFA) fixed MCF-7 cells using GRLX2 antibody (13381-1-AP) at dilution of 1:400 and CoraLite®488-Conjugated Goat Anti-Rabbit IgG(H+L).