

For Research Use Only

NCAPD2 Polyclonal antibody, PBS Only

Catalog Number: 13382-1-PBS

Featured Product



Basic Information

Catalog Number:

13382-1-PBS

Size:

100ug, Concentration: 1 mg/ml by Nanodrop;

Source:

Rabbit

Isotype:

IgG

Immunogen Catalog Number:

AG4219

GenBank Accession Number:

BC028182

GeneID (NCBI):

9918

UNIPROT ID:

Q15021

Full Name:

non-SMC condensin I complex, subunit D2

Calculated MW:

1401 aa, 157 kDa

Observed MW:

157 kDa

Purification Method:

Antigen affinity purification

Applications

Tested Applications:

WB, IHC, IF/ICC, IP, Indirect ELISA

Species Specificity:

human, mouse, rat

Background Information

NCAPD2 is a regulatory subunit of the condensin complex, which is required for conversion of interphase chromatin into mitotic-like condense chromosomes. Condensin complexes are heteropentamers comprised of two SMC (structural maintenance of chromosomes) subunits and three non-SMC subunits. The C-terminus of NCAPD2 interacts with Histones H1 and H3 through their histone tails. A loss of NCAPD2 can lead to the disorganization of chromatid axes, misalignment of sister chromatids during metaphase and delayed entry into anaphase.

Storage

Storage:

Store at -80°C.

Storage Buffer:

PBS Only

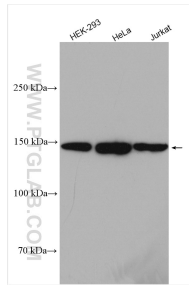
For technical support and original validation data for this product please contact:

T: 1 (888) 4PTGLAB (1-888-478-4522) (toll free in USA), or 1(312) 455-8498 (outside USA)

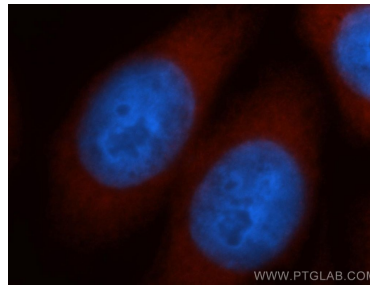
E: proteintech@ptglab.com
W: ptglab.com

This product is exclusively available under Proteintech Group brand and is not available to purchase from any other manufacturer.

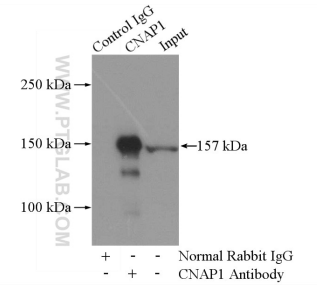
Selected Validation Data



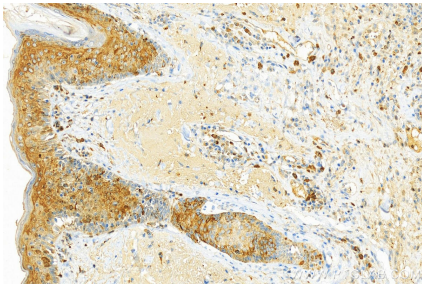
HEK-293 cells were subjected to SDS PAGE followed by western blot with 13382-1-AP (NCAPD2 antibody) at dilution of 1:1500 incubated at room temperature for 1.5 hours. This data was developed using the same antibody clone with 13382-1-PBS in a different storage buffer formulation.



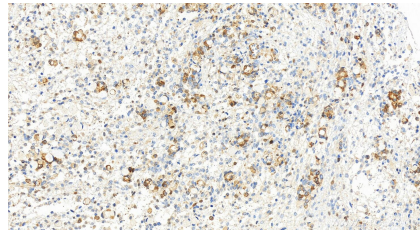
Immunofluorescent analysis of HeLa cells, using NCAPD2 antibody 13382-1-AP at 1:50 dilution and Rhodamine-labeled goat anti-rabbit IgG (red). Blue pseudocolor = DAPI (fluorescent DNA dye). This data was developed using the same antibody clone with 13382-1-PBS in a different storage buffer formulation.



IP result of anti-NCAPD2 (IP:13382-1-AP, 4ug; Detection:13382-1-AP 1:600) with HEK-293 cells lysate 2800ug. This data was developed using the same antibody clone with 13382-1-PBS in a different storage buffer formulation.



Immunohistochemical analysis of paraffin-embedded skin cancer slide using 13382-1-AP (NCAPD2 antibody) at dilution of 1:300 (under 20x lens). Heat mediated antigen retrieval with Tris-EDTA buffer (pH 9.0). This data was developed using the same antibody clone with 13382-1-PBS in a different storage buffer formulation.



Immunohistochemical analysis of paraffin-embedded human ovary cancer tissue slide using 13382-1-AP (NCAPD2 antibody) at dilution of 1:400 (under 20x lens). Heat mediated antigen retrieval with Tris-EDTA buffer (pH 9.0). This data was developed using the same antibody clone with 13382-1-PBS in a different storage buffer formulation.