

For Research Use Only

# HSPH1 Polyclonal antibody

Catalog Number: 13383-1-AP

7 Publications



## Basic Information

<b>Catalog Number:</b> 13383-1-AP	<b>GenBank Accession Number:</b> BC037553	<b>Purification Method:</b> Antigen affinity purification
<b>Size:</b> 150ul , Concentration: 500 ug/ml by Nanodrop and 387 ug/ml by Bradford method using BSA as the standard;	<b>GeneID (NCBI):</b> 10808	<b>Recommended Dilutions:</b> WB 1:500-1:2000 IHC 1:200-1:1200
<b>Source:</b> Rabbit	<b>UNIPROT ID:</b> Q92598	
<b>Isotype:</b> IgG	<b>Full Name:</b> heat shock 105kDa/110kDa protein 1	
<b>Immunogen Catalog Number:</b> AG4224	<b>Calculated MW:</b> 858 aa, 97 kDa	
	<b>Observed MW:</b> 110 kDa	

## Applications

<b>Tested Applications:</b> WB, IHC, ELISA	<b>Positive Controls:</b> WB : MCF7 cells, HeLa cells, human brain tissue, Jurkat cells, K-562 cells
<b>Cited Applications:</b> WB, IF	<b>IHC :</b> human colon cancer tissue, human testis tissue, human liver cancer tissue, human pancreas cancer tissue
<b>Species Specificity:</b> human	
<b>Cited Species:</b> human, mouse, rat	
<b>Note-IHC: suggested antigen retrieval with TE buffer pH 9.0; (*) Alternatively, antigen retrieval may be performed with citrate buffer pH 6.0</b>	

## Background Information

HSP105, also known as HSP110 or HSPH1, belongs to the heat shock protein (HSP) family. Human HSP105 is a high-molecular-weight chaperone protein expressed at constitutively low levels as a cytoplasmic  $\alpha$ -isoform and as an inducible nuclear  $\beta$ -isoform on exposure to various forms of stress. HSP105 is constitutively overexpressed in several solid tumors, including melanoma, breast, thyroid, and gastroenteric cancers, and exerts antiapoptotic functions. Recently HSP105 has been identified as a novel candidate biomarker of lymphoma aggressiveness. This antibody recognizes both HSP105 $\alpha$  and HSP105 $\beta$  isoforms. Western blot analysis using this antibody detected a major band around 100-110 kDa in Jurkat cells.

## Notable Publications

Author	Pubmed ID	Journal	Application
Simona Cugusi	36121223	Mol Cell Biol	WB
Shan Lu	36075972	Nat Cell Biol	IF
Lihua Yang	24599545	Mol Reprod Dev	WB

## Storage

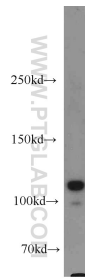
**Storage:**  
Store at -20°C. Stable for one year after shipment.  
**Storage Buffer:**  
PBS with 0.02% sodium azide and 50% glycerol pH 7.3.  
Aliquoting is unnecessary for -20°C storage

\*\*\* 20ul sizes contain 0.1% BSA

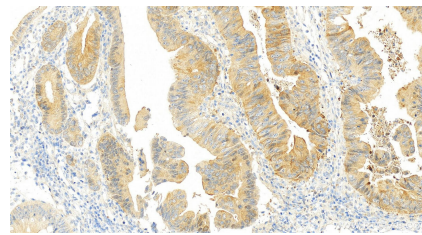
For technical support and original validation data for this product please contact:  
T: 1 (888) 4PTGLAB (1-888-478-4522) (toll free in USA), or 1(312) 455-8498 (outside USA)  
E: [proteintech@ptglab.com](mailto:proteintech@ptglab.com)  
W: [ptglab.com](http://ptglab.com)

This product is exclusively available under Proteintech Group brand and is not available to purchase from any other manufacturer.

## Selected Validation Data



MCF7 cells were subjected to SDS PAGE followed by western blot with 13383-1-AP (HSPH1 antibody) at dilution of 1:1000 incubated at room temperature for 1.5 hours.



Immunohistochemical analysis of paraffin-embedded human colon cancer tissue slide using 13383-1-AP (HSPH1 antibody) at dilution of 1:1200 (under 20x lens). Heat mediated antigen retrieval with Tris-EDTA buffer (pH 9.0).