

For Research Use Only

CPN1 Polyclonal antibody

Catalog Number: 13385-1-AP **2 Publications**



Basic Information

Catalog Number: 13385-1-AP	GenBank Accession Number: BC027897	Purification Method: Antigen affinity purification
Size: 150ul , Concentration: 450 µg/ml by Nanodrop and 133 µg/ml by Bradford method using BSA as the standard;	GeneID (NCBI): 1369	Recommended Dilutions: WB 1:500-1:2000 IHC 1:20-1:200 IF 1:10-1:100
Source: Rabbit	Full Name: carboxypeptidase N, polypeptide 1	
Isotype: IgG	Calculated MW: 458 aa, 52 kDa	
Immunogen Catalog Number: AG4035	Observed MW: 50 kDa	

Applications

Tested Applications: FC, IF, IHC, WB, ELISA	Positive Controls: WB : Raji cells, COLO 320 cells IHC : human liver cancer tissue, IF : COLO 320 cells,
Cited Applications: IHC	
Species Specificity: human	
Cited Species: human	

Note-IHC: suggested antigen retrieval with TE buffer pH 9.0; (*) Alternatively, antigen retrieval may be performed with citrate buffer pH 6.0

Background Information

The molecular weights reported for intact and truncated catalytic subunit are 55-56 kDa and 48-49 kDa by SDS-PAGE, whereas the calculated molecular weights based on the sequence are only 50 kDa or 45 kDa. Additional mass added by the O-linked carbohydrate can resolve this discrepancy.

Notable Publications

Author	Pubmed ID	Journal	Application
Ranliang Cui	34711246	Cancer Cell Int	IHC
Ranliang Cui	35431930	Front Pharmacol	IHC

Storage

Storage:
Store at -20°C. Stable for one year after shipment.
Storage Buffer:
PBS with 0.02% sodium azide and 50% glycerol pH 7.3.
Aliquoting is unnecessary for -20°C storage

*** 20ul sizes contain 0.1% BSA

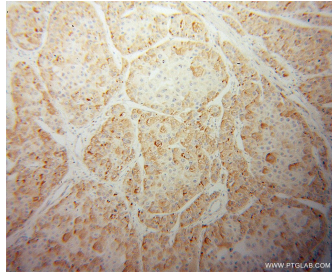
For technical support and original validation data for this product please contact:
T: 1 (888) 4PTGLAB (1-888-478-4522) (toll free in USA), or 1(312) 455-8498 (outside USA)
E: proteintech@ptglab.com
W: ptglab.com

This product is exclusively available under Proteintech Group brand and is not available to purchase from any other manufacturer.

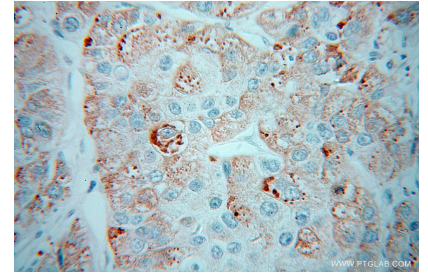
Selected Validation Data



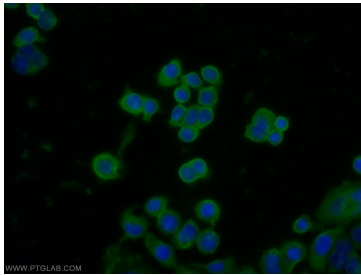
Raji cells were subjected to SDS PAGE followed by western blot with 13385-1-AP (CPN1 antibody) at dilution of 1:300 incubated at room temperature for 1.5 hours.



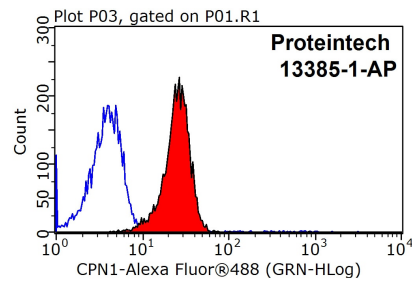
Immunohistochemical analysis of paraffin-embedded human liver cancer using 13385-1-AP (CPN1 antibody) at dilution of 1:100 (under 10x lens).



Immunohistochemical analysis of paraffin-embedded human liver cancer using 13385-1-AP (CPN1 antibody) at dilution of 1:100 (under 40x lens).



Immunofluorescent analysis of COLO 320 cells using 13385-1-AP (CPN1 antibody) at dilution of 1:25 and Alexa Fluor 488-conjugated AffiniPure Goat Anti-Rabbit IgG(H+L).



1×10^6 HeLa cells were stained with 0.2ug CPN1 antibody (13385-1-AP, red) and control antibody (blue). Fixed with 90% MeOH blocked with 3% BSA (30 min). Alexa Fluor 488-conjugated AffiniPure Goat Anti-Rabbit IgG(H+L) with dilution 1:1500.