

For Research Use Only

CLEC1A Polyclonal antibody

Catalog Number: 13394-1-AP **1 Publications**



Basic Information

Catalog Number: 13394-1-AP	GenBank Accession Number: BC039072	Purification Method: Antigen affinity purification
Size: 150ul, Concentration: 500 µg/ml by Nanodrop and 360 µg/ml by Bradford method using BSA as the standard;	GeneID (NCBI): 51267	Recommended Dilutions: WB 1:500-1:1000 IHC 1:50-1:500
Source: Rabbit	Full Name: C-type lectin domain family 1, member A	
Isotype: IgG	Calculated MW: 280 aa, 32 kDa	
Immunogen Catalog Number: AG4058	Observed MW: 50 kDa, 32 kDa	

Applications

Tested Applications: IHC, WB, ELISA	Positive Controls:
Cited Applications: IF	WB: mouse lung tissue, mouse thymus tissue, rat lung tissue
Species Specificity: human, mouse, rat	IHC: mouse lung tissue, human lung cancer tissue
Cited Species: human, mouse	
Note-IHC: suggested antigen retrieval with TE buffer pH 9.0; (*) Alternatively, antigen retrieval may be performed with citrate buffer pH 6.0	

Background Information

CLEC1A (C-type lectin domain family 1 member A) is a single-pass type II membrane protein that contains one C-type lectin domain. Members of the C-type lectin domain family share a common protein fold and have diverse functions, such as cell adhesion, cell-cell signalling, glycoprotein turnover, and roles in inflammation and immune response. CLEC1A is expressed preferentially in dendritic cells and plays a role in regulating dendritic cell function (PMID: 10671229).

Notable Publications

Author	Pubmed ID	Journal	Application
Guoqiang Zhu	34043748	Invest Ophthalmol Vis Sci	IF

Storage

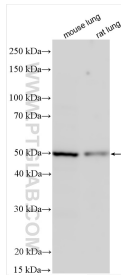
Storage:
Store at -20°C. Stable for one year after shipment.
Storage Buffer:
PBS with 0.02% sodium azide and 50% glycerol pH 7.3.
Aliquoting is unnecessary for -20°C storage

*** 20ul sizes contain 0.1% BSA

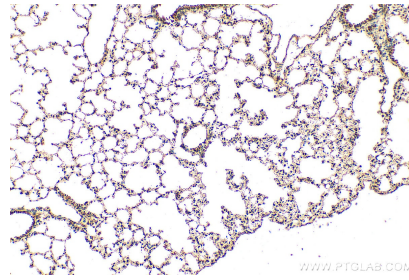
For technical support and original validation data for this product please contact:
T: 1 (888) 4PTGLAB (1-888-478-4522) (toll free in USA), or 1(312) 455-8498 (outside USA)
E: proteintech@ptglab.com
W: ptglab.com

This product is exclusively available under Proteintech Group brand and is not available to purchase from any other manufacturer.

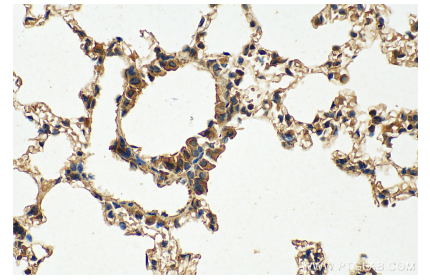
Selected Validation Data



Various lysates were subjected to SDS PAGE followed by western blot with 13394-1-AP (CLEC1A antibody) at dilution of 1:800 incubated at room temperature for 1.5 hours.



Immunohistochemical analysis of paraffin-embedded mouse lung tissue slide using 13394-1-AP (CLEC1A antibody) at dilution of 1:200 (under 10x lens). Heat mediated antigen retrieval with Tris-EDTA buffer (pH 9.0).



Immunohistochemical analysis of paraffin-embedded mouse lung tissue slide using 13394-1-AP (CLEC1A antibody) at dilution of 1:200 (under 40x lens). Heat mediated antigen retrieval with Tris-EDTA buffer (pH 9.0).