

For Research Use Only

GPR161 Polyclonal antibody

Catalog Number: 13398-1-AP

Featured Product

39 Publications



Basic Information

Catalog Number:

13398-1-AP

Size:

150ul, Concentration: 700 ug/ml by Nanodrop;

Source:

Rabbit

Isotype:

IgG

Immunogen Catalog Number:

AG4221

GenBank Accession Number:

BC028163

GeneID (NCBI):

23432

UNIPROT ID:

Q8N6U8

Full Name:

G protein-coupled receptor 161

Calculated MW:

529 aa, 59 kDa

Observed MW:

59 kDa

Purification Method:

Antigen affinity purification

Recommended Dilutions:

WB 1:1000-1:8000

IF/ICC 1:200-1:800

Applications

Tested Applications:

WB, IF/ICC, ELISA

Cited Applications:

WB, IF, IP, CoIP

Species Specificity:

human, mouse, canine

Cited Species:

human, mouse, pig, chicken, zebrafish, bovine

Positive Controls:

WB : mouse brain tissue,

IF/ICC : MDCK cells, ARPE-19 cells, C2C12 cells

Background Information

GPR161 (also known as RE2) is an orphan G protein-coupled receptor and plays an important role in the Hh pathway. In the absence of Hh signals, GPR161 localizes to primary cilia and keeps the downstream GLI transcription factors in their repressor forms (PMID: 26305592). Ciliary localization of GPR161 requires TULP3 and the IFT-A complex. In the presence of SHH, GPR161 is removed from primary cilia and is internalized into recycling endosomes, preventing its activity and allowing activation of the Shh signaling. GPR161 has a calculated molecular mass of 59 kDa. The 70-kDa band probably represents a modified version of GPR161 (PMID: 18250320).

Notable Publications

Author	Pubmed ID	Journal	Application
Xin Zong	32914682	RNA Biol	WB
Swapnil Rohidas Shinde	33185668	J Cell Biol	IF
Shichao Duan	33241915	EMBO J	WB,IF

Storage

Storage:

Store at -20°C. Stable for one year after shipment.

Storage Buffer:

PBS with 0.02% sodium azide and 50% glycerol pH 7.3.

Aliquoting is unnecessary for -20°C storage

*** 20ul sizes contain 0.1% BSA

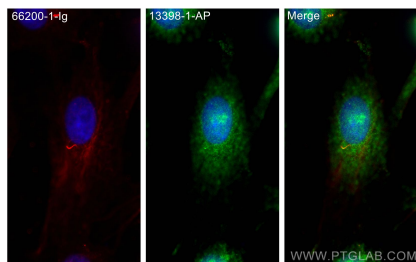
For technical support and original validation data for this product please contact:

T: 1 (888) 4PTGLAB (1-888-478-4522) (toll free in USA), or 1(312) 455-8498 (outside USA)

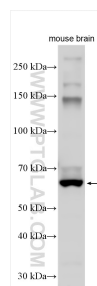
E: proteintech@ptglab.com
W: ptglab.com

This product is exclusively available under Proteintech Group brand and is not available to purchase from any other manufacturer.

Selected Validation Data



Immunofluorescent analysis of (4% PFA) fixed MDCK cells using GPR161 antibody (13398-1-AP) at dilution of 1:400 and CoraLite® 488-Conjugated Goat Anti-Rabbit IgG(H+L), acetylated Tubulin(Lys40) antibody (66200-1-Ig, Clone: 7E5H8, red).



mouse brain tissue was subjected to SDS PAGE followed by western blot with 13398-1-AP (GPR161 antibody) at dilution of 1:4000 incubated at room temperature for 1.5 hours.