

PDP2 Polyclonal antibody

Catalog Number: 13404-1-AP

2 Publications

Basic Information

Catalog Number:

13404-1-AP

Size:

150ul , Concentration: 500 µg/ml by Nanodrop and 380 µg/ml by Bradford method using BSA as the standard;

Source:

Rabbit

Isotype:

IgG

Immunogen Catalog Number:

AG4257

GenBank Accession Number:

BC028030

GeneID (NCBI):

57546

UNIPROT ID:

Q9P2J9

Full Name:

pyruvate dehydrogenase phosphatase isoenzyme 2

Calculated MW:

529 aa, 60 kDa

Observed MW:

53 kDa

Purification Method:

Antigen affinity purification

Recommended Dilutions:

WB 1:500-1:2000

IHC 1:20-1:200

Applications

Tested Applications:

WB, IHC, ELISA

Cited Applications:

WB

Species Specificity:

human, mouse, rat

Cited Species:

human, mouse

Note-IHC: suggested antigen retrieval with TE buffer pH 9.0; (*) Alternatively, antigen retrieval may be performed with citrate buffer pH 6.0

Positive Controls:

WB : mouse skeletal muscle tissue, HeLa cells, mouse kidney tissue

IHC : mouse brain tissue, human lymphoma tissue

Background Information

PDP2, is the Ca²⁺-insensitive isoform of pyruvate dehydrogenase phosphatase and found in liver and adipose tissue. In adipose tissue, insulin reduces the concentration dependence of PDP2 activity for Mg²⁺ (PMID:12676647). It catalyzes the dephosphorylation and concomitant reactivation of the mitochondrial pyruvate dehydrogenase multienzyme complex. It can be detected the mature (52 kDa) and the immature (60 kDa) bands in western blot.

Notable Publications

Author	Pubmed ID	Journal	Application
Xiaoyu Ma	25301052	Nat Commun	WB
Wanchun Yang	33725483	Dev Cell	WB

Storage

Storage:

Store at -20°C. Stable for one year after shipment.

Storage Buffer:

PBS with 0.02% sodium azide and 50% glycerol pH 7.3.

Aliquoting is unnecessary for -20°C storage

*** 20ul sizes contain 0.1% BSA

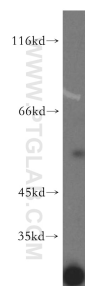
For technical support and original validation data for this product please contact:

T: 1 (888) 4PTGLAB (1-888-478-4522) (toll free in USA), or 1(312) 455-8498 (outside USA)

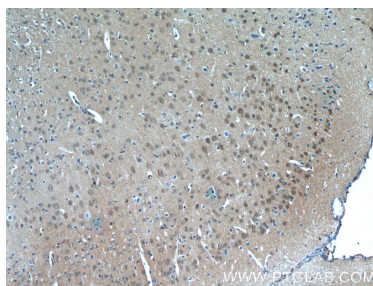
E: proteintech@ptglab.com
W: ptglab.com

This product is exclusively available under Proteintech Group brand and is not available to purchase from any other manufacturer.

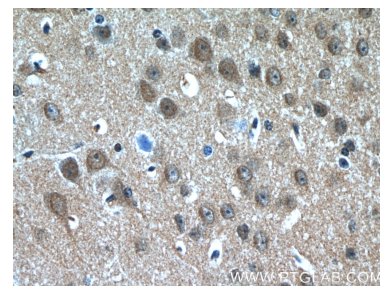
Selected Validation Data



mouse skeletal muscle tissue were subjected to SDS PAGE followed by western blot with 13404-1-AP (PDP2 antibody) at dilution of 1:300 incubated at room temperature for 1.5 hours.



Immunohistochemical analysis of paraffin-embedded mouse brain tissue slide using 13404-1-AP (PDP2 Antibody) at dilution of 1:50 (under 10x lens).



Immunohistochemical analysis of paraffin-embedded mouse brain tissue slide using 13404-1-AP (PDP2 Antibody) at dilution of 1:50 (under 40x lens).