

For Research Use Only

ATG10 Polyclonal antibody

Catalog Number: 13406-1-AP

1 Publications



Basic Information

Catalog Number:

13406-1-AP

Size:

150ul, Concentration: 700 ug/ml by Nanodrop;

Source:

Rabbit

Isotype:

IgG

Immunogen Catalog Number:

AG4052

GenBank Accession Number:

BC029268

GeneID (NCBI):

83734

UNIPROT ID:

Q9H0Y0

Full Name:

ATG10 autophagy related 10 homolog (S. cerevisiae)

Calculated MW:

220 aa, 25 kDa

Observed MW:

25-30 kDa

Purification Method:

Antigen affinity purification

Recommended Dilutions:

WB 1:500-1:1000

Applications

Tested Applications:

WB, ELISA

Cited Applications:

WB

Species Specificity:

human

Cited Species:

human

Positive Controls:

WB : K-562 cells, HeLa cells

Background Information

ATG10, also named as APG10L, is an E2-like enzyme involved in autophagy. It catalyzes the conjugation reaction between Atg12 and Atg5. ATG10 plays a role in adenovirus-mediated cell lysis.

Notable Publications

Author	Pubmed ID	Journal	Application
Doudou Tang	39715205	PLoS One	WB

Storage

Storage:

Store at -20°C. Stable for one year after shipment.

Storage Buffer:

PBS with 0.02% sodium azide and 50% glycerol pH 7.3.

Aliquoting is unnecessary for -20°C storage

*** 20ul sizes contain 0.1% BSA

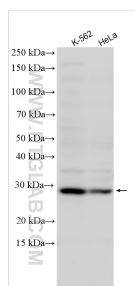
For technical support and original validation data for this product please contact:

T: 1 (888) 4PTGLAB (1-888-478-4522) (toll free in USA), or 1(312) 455-8498 (outside USA)

E: proteintech@ptglab.com
W: ptglab.com

This product is exclusively available under Proteintech Group brand and is not available to purchase from any other manufacturer.

Selected Validation Data



Various lysates were subjected to SDS PAGE followed by western blot with 13406-1-AP (ATG10 antibody) at dilution of 1:800 incubated at room temperature for 1.5 hours.