

For Research Use Only

ATG10 Polyclonal antibody, PBS Only

Catalog Number: 13406-1-PBS



Basic Information

Catalog Number:

13406-1-PBS

Size:

100ug, Concentration: 1 mg/ml by Nanodrop;

Source:

Rabbit

Isotype:

IgG

Immunogen Catalog Number:

AG4052

GenBank Accession Number:

BC029268

GeneID (NCBI):

83734

UNIPROT ID:

Q9HOY0

Full Name:

ATG10 autophagy related 10 homolog (S. cerevisiae)

Calculated MW:

220 aa, 25 kDa

Observed MW:

25-30 kDa

Purification Method:

Antigen affinity purification

Applications

Tested Applications:

WB, Indirect ELISA

Species Specificity:

human

Background Information

ATG10, also named as APG10L, is an E2-like enzyme involved in autophagy. It catalyzes the conjugation reaction between Atg12 and Atg5. ATG10 plays a role in adenovirus-mediated cell lysis.

Storage

Storage:

Store at -80°C.

Storage Buffer:

PBS Only

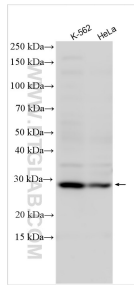
For technical support and original validation data for this product please contact:

T: 1 (888) 4PTGLAB (1-888-478-4522) (toll free in USA), or 1(312) 455-8498 (outside USA)

E: proteintech@ptglab.com
W: ptglab.com

This product is exclusively available under Proteintech Group brand and is not available to purchase from any other manufacturer.

Selected Validation Data



Various lysates were subjected to SDS PAGE followed by western blot with 13406-1-AP (ATG10 antibody) at dilution of 1:800 incubated at room temperature for 1.5 hours. This data was developed using the same antibody clone with 13406-1-PBS in a different storage buffer formulation.