

For Research Use Only

# Occludin Polyclonal antibody

Catalog Number: 13409-1-AP

Featured Product

485 Publications



## Basic Information

### Catalog Number:

13409-1-AP

### Size:

150ul, Concentration: 900 ug/ml by Nanodrop;

### Source:

Rabbit

### Isotype:

IgG

### Immunogen Catalog Number:

AG4057

### GenBank Accession Number:

BC029886

### GeneID (NCBI):

4950

### UNIPROT ID:

Q16625

### Full Name:

occludin

### Calculated MW:

522 aa, 59 kDa

### Observed MW:

59 kDa

### Purification Method:

Antigen affinity purification

### Recommended Dilutions:

WB 1:2000-1:16000

IP 0.5-4.0 ug for 1.0-3.0 mg of total protein lysate

IHC 1:50-1:800

IF/ICC 1:200-1:800

## Applications

### Tested Applications:

WB, IHC, IF/ICC, IP, ELISA

### Cited Applications:

WB, IHC, IF, IP

### Species Specificity:

human, mouse, rat

### Cited Species:

human, mouse, rat, pig, canine, chicken, bovine

**Note-IHC: suggested antigen retrieval with TE buffer pH 9.0; (\*) Alternatively, antigen retrieval may be performed with citrate buffer pH 6.0**

### Positive Controls:

**WB:** A431 cells, mouse liver tissue, human kidney tissue, human liver tissue, mouse colon tissue, mouse kidney tissue, rat kidney tissue, rat liver tissue

**IP:** mouse liver tissue,

**IHC:** human breast cancer tissue,

**IF/ICC:** MCF-7 cells,

## Background Information

Occludin is an integral membrane protein located at the tight junction. It is a tetraspanin protein with four transmembrane domains, intracellular N and C termini and two extracellular loops. Occludin plays a role in the formation and regulation of the tight junction paracellular permeability barrier. Occludin can exist in different isoforms, owing to modifications at the posttranscriptional and posttranslational levels, the monomeric occludin migrates as 53-65 kDa on SDS-PAGE (PMID: 22083955; 19457074).

## Notable Publications

Author	Pubmed ID	Journal	Application
Biqi Han	36209609	J Hazard Mater	WB
Qi-Le Zuo	34590865	J Agric Food Chem	IHC
Cheng-Kuei Wu	36175474	Sci Rep	WB

## Storage

### Storage:

Store at -20°C. Stable for one year after shipment.

### Storage Buffer:

PBS with 0.02% sodium azide and 50% glycerol, pH7.3

Aliquoting is unnecessary for -20°C storage

\*\*\* 20ul sizes contain 0.1% BSA

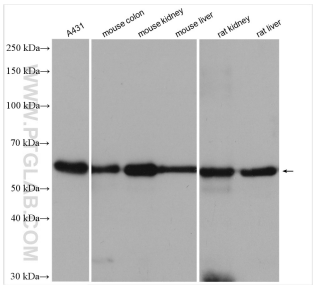
For technical support and original validation data for this product please contact:

T: 1 (888) 4PTGLAB (1-888-478-4522) (toll free in USA), or 1(312) 455-8498 (outside USA)

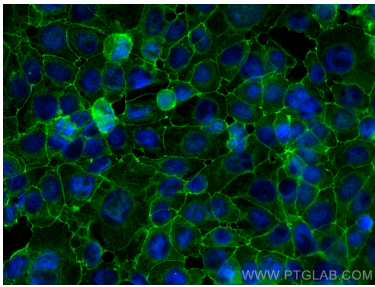
E: [proteintech@ptglab.com](mailto:proteintech@ptglab.com)  
W: [ptglab.com](http://ptglab.com)

This product is exclusively available under Proteintech Group brand and is not available to purchase from any other manufacturer.

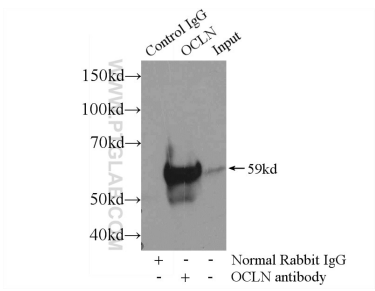
Selected Validation Data



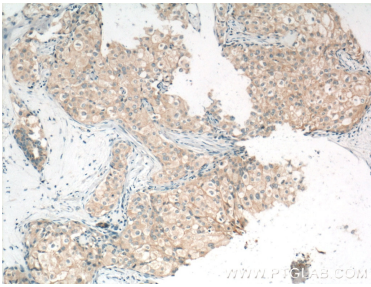
Various lysates were subjected to SDS PAGE followed by western blot with 13409-1-AP (Occludin antibody) at dilution of 1:8000 incubated at room temperature for 1.5 hours.



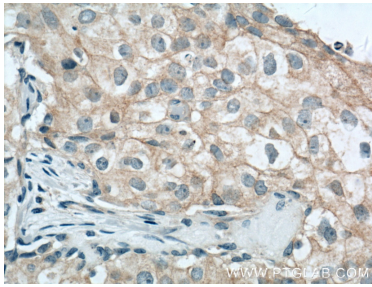
Immunofluorescent analysis of (-20°C Methanol) fixed MCF-7 cells using Occludin antibody (13409-1-AP) at dilution of 1:400 and CoraLite®488-Conjugated AffiniPure Goat Anti-Rabbit IgG(H+L).



IP result of anti-Occludin (IP:13409-1-AP, 3ug; Detection:13409-1-AP 1:500) with mouse liver tissue lysate 6400ug.



Immunohistochemical analysis of paraffin-embedded human breast cancer tissue slide using 13409-1-AP (Occludin Antibody) at dilution of 1:800 (under 10x lens). Heat mediated antigen retrieval with Tris-EDTA buffer (pH 9.0).



Immunohistochemical analysis of paraffin-embedded human breast cancer tissue slide using 13409-1-AP (Occludin Antibody) at dilution of 1:800 (under 40x lens). Heat mediated antigen retrieval with Tris-EDTA buffer (pH 9.0).