

For Research Use Only

TRPV6 Polyclonal antibody, PBS Only

Catalog Number: 13411-1-PBS



Basic Information

Catalog Number: 13411-1-PBS	GenBank Accession Number: BC034814	Purification Method: Antigen affinity purification
Size: 100ug, Concentration: 1 mg/ml by Nanodrop;	GeneID (NCBI): 55503	
Source: Rabbit	UNIPROT ID: Q9H1D0	
Isotype: IgG	Full Name: transient receptor potential cation channel, subfamily V, member 6	
Immunogen Catalog Number: AG4060	Calculated MW: 725 aa, 83 kDa	
	Observed MW: 83 kDa, 70 kDa	

Applications

Tested Applications:
WB, IF/ICC, IP, Indirect ELISA

Species Specificity:
human, mouse, rat

Background Information

TRPV6, also named as CAT1 or ECaC2, is a member of the transient receptor potential (TRP) family of membrane proteins. Unlike most TRP channels, TRPV6 and its closest relative, TRPV5, are calcium-selective channels. TRPV6 is highly expressed in the proximal intestine, placenta and exocrine tissues (PMID: 12869611). It is probably involved in calcium absorption in various tissues, including calcium reabsorption in kidney. TRPV6 is overexpressed in some cancers and exhibits oncogenic potential.

Storage

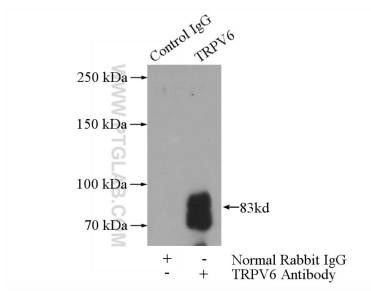
Storage:
Store at -80°C.

Storage Buffer:
PBS Only

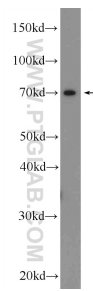
For technical support and original validation data for this product please contact:
T: 1 (888) 4PTGLAB (1-888-478-4522) (toll free in USA), or 1(312) 455-8498 (outside USA) E: proteintech@ptglab.com
W: ptglab.com

This product is exclusively available under Proteintech Group brand and is not available to purchase from any other manufacturer.

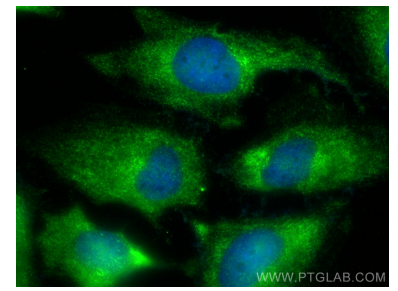
Selected Validation Data



IP result of anti-TRPV6 (IP:13411-1-AP, 4ug; Detection:13411-1-AP 1:300) with mouse kidney tissue lysate 4000ug. This data was developed using the same antibody clone with 13411-1-PBS in a different storage buffer formulation.



human placenta tissue were subjected to SDS PAGE followed by western blot with 13411-1-AP (TRPV6 Antibody) at dilution of 1:1000 incubated at room temperature for 1.5 hours. This data was developed using the same antibody clone with 13411-1-PBS in a different storage buffer formulation.



Immunofluorescent analysis of (-20°C Ethanol) fixed HeLa cells using TRPV6 antibody (13411-1-AP) at dilution of 1:400 and CoraLite®488-Conjugated Goat Anti-Rabbit IgG(H+L) (SA00013-2). This data was developed using the same antibody clone with 13411-1-PBS in a different storage buffer formulation.