

For Research Use Only

# HRH1 Polyclonal antibody

Catalog Number: 13413-1-AP

Featured Product

13 Publications



## Basic Information

### Catalog Number:

13413-1-AP

### Size:

150ul, Concentration: 400 µg/ml by Nanodrop and 333 µg/ml by Bradford method using BSA as the standard;

### Source:

Rabbit

### Isotype:

IgG

### Immunogen Catalog Number:

AG4067

### GenBank Accession Number:

BC060802

### GeneID (NCBI):

3269

### UNIPROT ID:

P35367

### Full Name:

histamine receptor H1

### Calculated MW:

487 aa, 56 kDa

### Observed MW:

56 kDa

### Purification Method:

Antigen affinity purification

### Recommended Dilutions:

WB 1:500-1:1000

IHC 1:20-1:200

## Applications

### Tested Applications:

WB, IHC, ELISA

### Cited Applications:

WB, IHC, IF, IP

### Species Specificity:

human, mouse, rat

### Cited Species:

human, mouse, rat

**Note-IHC: suggested antigen retrieval with TE buffer pH 9.0; (\*) Alternatively, antigen retrieval may be performed with citrate buffer pH 6.0**

### Positive Controls:

WB : human colon tissue, Jurkat cells

IHC : human endometrial cancer tissue, human colon cancer tissue, human trachea tissue

## Notable Publications

Author	Pubmed ID	Journal	Application
Liang Xie	32964244	Psychopharmacology (Berl)	IHC, WB
Wen-Jun Su	30483062	Front Cell Neurosci	WB
Yi-Fang Ding	35587368	Aging (Albany NY)	WB

## Storage

### Storage:

Store at -20°C. Stable for one year after shipment.

### Storage Buffer:

PBS with 0.02% sodium azide and 50% glycerol, pH7.3

Aliquoting is unnecessary for -20°C storage

\*\*\* 20ul sizes contain 0.1% BSA

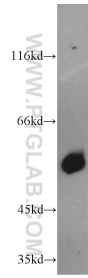
For technical support and original validation data for this product please contact:

T: 1 (888) 4PTGLAB (1-888-478-4522) (toll free in USA), or 1(312) 455-8498 (outside USA)

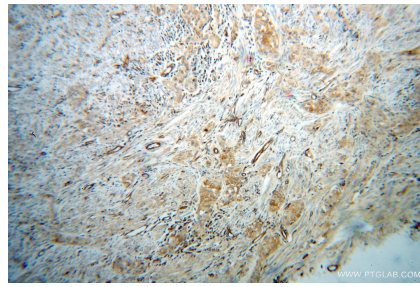
E: [proteintech@ptglab.com](mailto:proteintech@ptglab.com)  
W: [ptglab.com](http://ptglab.com)

This product is exclusively available under Proteintech Group brand and is not available to purchase from any other manufacturer.

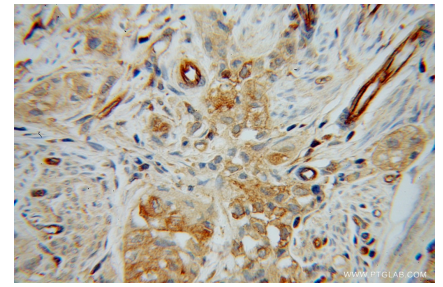
## Selected Validation Data



human colon tissue were subjected to SDS PAGE followed by western blot with 13413-1-AP (HRH1 antibody) at dilution of 1:500 incubated at room temperature for 1.5 hours.



Immunohistochemical analysis of paraffin-embedded human endometrial cancer using 13413-1-AP (HRH1 antibody) at dilution of 1:100 (under 10x lens).



Immunohistochemical analysis of paraffin-embedded human endometrial cancer using 13413-1-AP (HRH1 antibody) at dilution of 1:100 (under 40x lens).